

**ARCHITECTURAL SURVEY UPDATE
AND GIS PILOT PROJECT/
KINSTON BYPASS PROJECT
SOUTH OF AND ALONG US 70,
LENOIR COUNTY, NORTH CAROLINA**

**WBS # 45200.1
FA# SPR-0SPR(49)
TIP No. R-2553**

Prepared For:

**Office of Human Environment
Project Development and Environmental Analysis Branch
North Carolina Department of Transportation
and Federal Highway Administration**

Prepared By:

**URS Corporation – North Carolina
1600 Perimeter Park Drive
Morrisville, NC 27560**

**Marvin A. Brown
Principal Investigator**

August 2010

**ARCHITECTURAL SURVEY UPDATE
AND GIS PILOT PROJECT/
KINSTON BYPASS PROJECT IN
SOUTH OF AND ALONG US 70,
LENOIR COUNTY, NORTH CAROLINA**

**WBS # 45200.1
FA# SPR-0SPR(49)
TIP No. R-2553**

Prepared For:

**Office of Human Environment
Project Development and Environmental Analysis Branch
North Carolina Department of Transportation
and Federal Highway Administration**

Prepared By:

**URS Corporation – North Carolina
1600 Perimeter Park Drive
Morrisville, NC 27560**

**Marvin A. Brown
Principal Investigator**

August 2010

**Marvin A. Brown, Principal Investigator
URS Corporation-North Carolina**

Date

**Mary Pope Furr, Supervisor
Historic Architectural Resources Section
North Carolina Department of Transportation**

Date

TABLE OF CONTENTS

TABLE OF CONTENTS	i
I. INTRODUCTION	1
II. SURVEY UPDATE AND METHODOLOGY	2
A. Existing Information Entered into Access Database	2
B. Architectural Fieldwork	3
C. Identification of Potentially Eligible Resources	4
D. Update GIS Mapping	3
III. RECOMMENDATIONS AND CONCLUSIONS	4
A. Standing Resources	4
B. HPO Access Database	5
IV. APPENDICES	6

I. INTRODUCTION

The North Carolina Department of Transportation (NCDOT) divided the Architectural Survey Update and GIS Pilot Project/Kinston Bypass Project in Lenoir County (WBS # 45200.1, FA# SPR-0SPR(49), TIP No. R-2553) into three parts: a reconnaissance-level report to provide screening-level data; an updated inventory of southern Lenoir County (along and south of US 70); and an updated inventory of northern Lenoir County (north of US 70). The consultant, URS Corporation-North Carolina, conducted and completed the reconnaissance-level portion of the project and is in the process of completing the inventory of northern Lenoir County under its on-call contract to provide historical architectural services for NCDOT. It conducted the updated inventory of southern Lenoir County under its environmental services contract with NCDOT for the Kinston Bypass Project.

The purpose of the overall project is twofold. First, it was designed to update the historic architectural survey for Lenoir County. Previous surveys conducted in the county include: a comprehensive architectural survey of Kinston (1979-1980); five National Register of Historic Places (NR) historic district nominations (1989 and 1994); a comprehensive architectural survey of Lenoir County outside of Kinston (1993-1994); the Kinston survey update (1994-1995); studies conducted for the Global TransPark and Crescent Road projects (1991, 1993, 1997, and 1998); and other surveys conducted within the county by the North Carolina Historic Preservation Office (HPO) as part of the Tar-Neuse River Basin survey (1976) and its general ongoing activities. Second, the overall project was designed to provide Lenoir County parcel numbers for all inventoried resources and GIS points for all newly inventoried resources.

The current phase of the project, which is the subject of this report, was for updating the inventory of the southern portion of Lenoir County, defined by properties along both sides of US 70 from the Wayne County line to the Jones County line and those areas directly south of US 70 to the Wayne, Duplin, and Jones county lines. This phase included the communities of LaGrange, Deep Run, and Pink Hill, but did not include work within the municipal limits of Kinston. (If such work within Kinston were to be undertaken, it would constitute a distinct fourth phase of the project.) The survey project was designed to comprehensively update the existing architectural survey of the rural properties in southern Lenoir County through the following five activities: (1) entering existing information on surveyed resources into the HPO's Access database; (2) conducting architectural fieldwork and entering new information into the HPO's database; (3) identifying resources that are potentially eligible for listing in the National Register of Historic Places (NR); (4) drafting a report; and (5) updating GIS mapping. This report satisfies the requirements of the fourth point. The other components, along with the methodological means necessary to complete them, are described in the text and appendices below.

II. SURVEY UPDATE AND METHODOLOGY

A. Existing Information Entered into Access Database

The project began when URS received a copy of the HPO's Lenoir County Access database and checked out from the HPO a trial set of 50 files of resources located within southern Lenoir County. With the information in the files, primarily from the survey forms, narrative descriptions, and photographs, URS populated paper survey forms prior to going out in the field. Due to potential changes to the resources and occasional lack of information, particularly in regards to outbuildings, the entries were provisional.

With the files, copies of the USGS survey maps provided by the HPO, the paper survey field forms for the 50 resources, and a notepad and digital camera in hand, the principal investigator (PI) then conducted fieldwork.¹ He visited the sites of all of the resources. Some of the resources were gone, which he noted on the paper database forms. For each resource that survived, even if only in small part or through an associated outbuilding, he updated the information on the paper survey field form. He also took at least three photographs and, for exceptional resources, as many as 25 to 30 photographs.

Based upon the fieldwork, URS then updated the 50 database records on the Access database and sent a copy of the updated database to the HPO for review, along with the paper survey files. The updates included changes to the resources in the basic data fields of the database. They also included completion of the narrative summary field, which was broken down into two parts. One part was a description/history of the resource taken from the narrative entry in the file or, in some cases, the 1998 county survey publication *Coastal Plain and Fancy*.² (In cases where neither existed, URS included the brief free comment from the original HPO survey form or drafted a narrative based upon the information and photographs included in the file.) The other part of the narrative was a brief account of how the resource had changed from its previous inventory to the present. The HPO commented on the updated forms, in writing. (Throughout the project, URS has been the repository of the Lenoir County database and has made the only electronic changes to that database. URS will maintain the database until both the southern *and* northern portions of the county are re-inventoried). Upon receiving the HPO's comments and suggestions, URS then revised the database.

Following the review of the first 50 forms, URS continued the above process for all of the remaining resources within southern Lenoir County and eight newly added resources. In consultation with the HPO, URS modified the structure of the database. These modifications

¹ URS Senior Architectural Historian Marvin A. Brown, who meets the Secretary of the Interior's Standards as a historian and an architectural historian, conducted all of the fieldwork and made the assessments and recommendations included within this report.

² Little, M. Ruth. *Coastal Plain and Fancy: The Historic Architecture of Lenoir County and Kinston, North Carolina*. Kinston: Lenoir County Historical Association, 1998.

allow editors and users to upload and view previously prepared narrative descriptions, historic photographs, and modern photographs for properties and districts (process outlined at Appendix B). With one added link, the user may now open a window that contains a large and representative selection of earlier photographs of each resource, which URS has scanned and added to the database.³ With a second link, the user may now open a window that contains the new photographs that URS took as part of the project (process for adding photographs outlined at Appendix C). With these actions and modifications, the user may, without the paper file at hand, access a significant amount of information on each resource.⁴

B. Architectural Fieldwork

The PI drove every road in Lenoir County south of and including US 70 as part of the architectural fieldwork. With him he had copies of the HPO's USGS quadrangle maps that identified previously recorded resources for the portion of the county along and south of US 70. These were the Comfort, Deep Run, Falling Creek, LaGrange, Pink Hill, Rivermont, and Seven Springs maps. He also had the paper files for each previously recorded resource, the provisionally completed Access database form, a copy of Little's *Coastal Plain and Fancy*, and a digital camera. The PI visited a total of 214 sites, broken down by type in the table below.

SITES VISITED	
Previously recorded sites of standing resources visited	203
Previously recorded archaeological sites visited	3
Newly recorded sites of standing resources visited	8
Total sites visited	214

At the 203 sites of previously recorded standing resources, 50 principal resources had been removed through fire, demolition, or other means of destruction, or by moving from the site. As recorded at the table below, 10 of these principal resources had already been removed by 1993-1994 and 40 were removed after those dates.

SITES WITH PRINCIPAL STANDING RESOURCES REMOVED	
Principal resource removed from site prior to 1993-1994 survey	10
Principal resource removed from site after 1993-1994 survey	40
Total sites with principal standing resources removed	50

³ The scope of work called for the consultant to scan only a few representative photos from the files where useful to supplement new photographs. However, due to the process developed for linking images, the dimensions of the enlarged-format contact sheets in the files and, not least, the usefulness of early photographs, the consultant scanned numerous earlier images, where available, for each resource.

⁴ The paper files still hold useful information not available on the database, including field notes, sketch maps, historical information, and all of the earlier photographs of the resource. Currently, resources are insufficient to scan all of these materials and add them to the database..

Therefore, as noted at the below table, the total number of previously recorded sites that no longer retain their principal standing resources is 25%. Of those, 5% had been lost prior to the 1993-1994 survey and 20% after that survey.

PERCENTAGE OF SITES WITH PRINCIPAL STANDING RESOURCES REMOVED	
Removed from site prior to 1993-1994 survey	5%
Removed from site after 1993-1994 survey	20%
Total of sites with principal standing resources removed	25%

At sites where principal standing resources survived, the PI photographed the principal resource, outbuildings, and other notable features. At sites where the principal resource had been removed, the PI photographed any surviving outbuildings and, where landscape features survived, the site of the principal resource.

In general, outside of destruction of resources, the previously inventoried principal resources were little changed over the last 16 to 17 years. Generally, those that were in poor condition in the early 1990s were in the same or worse condition, with few alterations other than those worked by time and neglect. Those that were in good condition in the early 1990s continue, in general, to be in good condition, again with few alterations. For the principal standing historic resources in Lenoir County, it may in broad terms still be the 1990s.

While principal resources have largely survived unchanged, a far greater number of outbuildings have been lost or have deteriorated heavily in the past two decades. Even at sites with carefully maintained principal resources, outbuildings are at best stabilized. The vast majority of survivors in the county from the mid-20th century and earlier are in serious danger of demolition or collapse in the not-too-distant future.

The scope of work required that the consultant record at least three new digital images of the principal resource and associated buildings at each site. However, due to the process developed for linking images and the great utility of modern photographs, the consultant took at least four to eight photographs at most resources and, where called for, upwards of 25 to 30 photographs at some sites. The PI determined that the larger number of photographs was necessary, due to limited photography of principal resources and, in particular, outbuildings, for some resources in earlier surveys.

C. Identification of Potentially Eligible Resources

Thirty-three resources within the southern section of the county were previously listed or determined eligible for NR listing, or found to be potentially eligible. Five of these are NR listed; seven have been determined NR-eligible through an official determination of eligibility (DOE); and the remaining 21 have been placed on the North Carolina Study List (Study List or SL) of resources that are potentially eligible for NR listing and merit further investigation. Four of the five NR-listed resources are standing resources that are believed to retain their integrity and significance and therefore continue to merit their listed status. The fifth—the Kinston Battlefield

site (LR-1435)—is an archaeological resource and therefore was not assessed as part of this project. (The Battlefield was, however, listed in the NR less than four years ago and appears little altered since then.) The five resources are listed and assessed in the below table.

RESOURCES LISTED IN THE NATIONAL REGISTER OF HISTORIC PLACES			
LR No.	Name	Status	Eligibility Comments
0001	Cedar Dell	NR	Appears to retain integrity and significance and to merit continued NR listing
0005	Jesse Jackson House	NR	Appears to retain integrity and significance and to merit continued NR listing
0008	Dempsey Wood House	NR	Appears to retain integrity and significance and to merit continued NR listing
1189	Kennedy Memorial Home	NR	Appears to retain integrity and significance and to merit continued NR listing
1435	Kinston Battlefield Areas 2, 3, and 4	NR	Archaeological site, so not assessed

Seven standing resources—listed and assessed at the below table—have been determined eligible through a DOE, either individually or as resources that contribute to a determined-eligible historic district. Five of these appear to retain their integrity and significance and to therefore merit continued DOE status.

Two individual resources that were determined to contribute to the Pink Hill Historic District (LR-570), which was found to be eligible through a DOE in 1994, are believed to no longer contribute to the district. The Pink Hill United Methodist Church (LR-1075) was demolished in the mid 1990s. The former Pink Hill Elementary School (LR-1076) is also believed to no longer contribute because it has lost its original 1927 school building, which had anchored it within the 1905-1935 period of significance of the district. The Pink Hill Historic District was determined eligible under Criterion A as representative of early twentieth-century, small town, rural development in North Carolina, and under Criterion C for its variety of early twentieth-century forms and styles. The district was reassessed as part of this project. It is recommended that its period of significance be extended to 1941, to run up to the onset of WWII. As the earliest surviving portion of the school dates to 1957, it clearly does not fall within the district’s period of significance and therefore no longer contributes to it.

RESOURCES DETERMINED NR-ELIGIBLE THROUGH A DETERMINATION OF ELIGIBILITY			
LR No.	Name	Status	Eligibility Comments
0570	Pink Hill Historic District	DOE	Appears to retain integrity and significance and to merit continued DOE status; recommended that period of significance be changed from 1905-1935 to 1905-1941
0700	Henry Loftin Herring Farm	DOE	Appears to retain integrity and significance and to merit continued DOE status; however, is threatened by deterioration
0703	Dr. James M. Parrott House	DOE	Appears to retain integrity and significance and to merit continued DOE status
0927	James A. & Laura McDaniel House ("Maxwood")	DOE	Appears to retain integrity and significance and to merit continued DOE status
1203	Kelly's Millpond Site	DOE	Appears to retain integrity and significance and to merit continued DOE status
1075	Pink Hill United Methodist Church	DOE	Has been demolished
1076	(former) Pink Hill Elementary School	DOE	Recommended as no longer a contributing resource to the Pink Hill Historic District (LR-0570); surviving buildings fall outside the district's current, and recommended extended, period of significance

Twenty-one standing resources, which are listed and assessed at the table below, have been placed on the North Carolina Study List Study List. It is believed that of these resources 14 retain sufficient significance and integrity to merit remaining on the list and that seven should be removed.

One of the 14 resources recommended for retention on the SL—the Moss Hill Elementary School (LR-1012)—was undergoing renovations and having additions constructed at the time of the re-inventory. As these alterations may well damage the integrity of the 1920s-era school building at the core of the campus, Moss Hill may no longer retain sufficient integrity for NR listing when the work is done. That assessment, however, will have to await completion of the work. The Blackledge-Harper House (LR-0003), another of the 14, was unsuccessfully nominated for NR listing in 1971 due to lack of integrity. The alterations that led to its rejection remain in place and it is therefore unlikely that it currently has sufficient integrity to merit NR listing.

Six of the seven resources recommended for removal from the SL no longer stand on their sites. The seventh—the Richard Noble House (LR-0790)—still stands in the county, but it has been moved approximately five miles from its original site and significantly altered. It is therefore believed to have lost its integrity and is recommended for removal from the list.

RESOURCES INCLUDED ON NORTH CAROLINA STUDY LIST OF POTENTIALLY NR-ELIGIBLE RESOURCES			
LR No.	Name	Status	Eligibility Comments
0003	Blackledge-Harper House	SL	May not have sufficient integrity to support NR listing
0790	Richard Noble House	SL	Recommended for removal from SL; moved miles from original site and much altered
0857	Moseley-Stroud House	SL	Appears to retain sufficient integrity and significance to merit continued SL status
0982	Raymond Jones House	SL	Recommended for removal from SL; no longer stands on site
0985	Sutton-Ivy-Dawson House	SL	Recommended for removal from SL; no longer stands on site
0989	Davis-Fordham-Grady House	SL	Recommended for removal from SL; no longer stands on site
0998	(former) Daly's Chapel Free Will Baptist Church	SL	Recommended for removal from SL; no longer stands on site
1008	Wiley Joel Rouse House	SL	Appears to retain sufficient integrity and significance to merit continued SL status
1012	Moss Hill Elementary School	SL	Appeared at time of resurvey to retain sufficient integrity and significance to merit continued SL status, but due to additions to and reconstruction of campus buildings when inventoried, should be reassessed after all work is completed
1027	Betty Wooten House (Davis-Wooten House)	SL	Recommended for removal from SL; no longer stands on site
1031	Davis-Robinson House	SL	Appears to retain sufficient integrity and significance to merit continued SL status
1040	Croom Meeting House/Church	SL	Appears to retain sufficient integrity and significance to merit continued SL status
1043	Lutson Stroud Log House	SL	Appears to retain sufficient integrity and significance to merit continued SL status
1044	Leary-Stroud House	SL	Appears to retain sufficient integrity and significance to merit continued SL status
1173	Melvin Jones House	SL	Recommended for removal from SL; no longer stands on site

1180	Vertie Noble House & Farm	SL	Appears to retain sufficient integrity and significance to merit continued SL status
1185	Wooten- Whaley House	SL	Appears to retain sufficient integrity and significance to merit continued SL status
1195	Elijah Loftin Farm (Mossy Oaks)	SL	Appears to retain sufficient integrity and significance to merit continued SL status
1197	Cobb-King- Humphrey House	SL	Appears to retain sufficient integrity and significance to merit continued SL status
1208	Coleman-Wooten-Williams House	SL	Appears to retain sufficient integrity and significance to merit continued SL status
1213	Simpson Waller House	SL	Appears to retain sufficient integrity and significance to merit continued SL status

D. Update GIS Mapping

URS updated the GIS data layers for Lenoir County maintained by the North Carolina HPO. As stated in the scope of work, URS added newly inventoried individual resources to the HPO's surveyed and mapped GIS layer and added newly inventoried districts/neighborhoods to the surveyed GIS layer. The scope further stated that the consultant would create and add center points of the newly inventoried districts/neighborhoods to the surveyed GIS layer. However, due to the peculiarities of the individual parcel upon which three newly inventoried resources/groups of resources are located, the three were mapped by a different approach.

The Demaris Stroud House (LR-1549), the Stroud Hipped-roof Houses (LR-1546), and the Stroud Gable-front Houses (LR-1547) are all located on the same large parcel, which has multiple disconnected components. As the total parcel is discontinuous, it has no clear center point. The house is located on the west side of US 258 at the southeastern tip of one large portion of the total parcel. It was therefore marked not by a center point, but by its specific location on the parcel. The group of hipped-roof houses is located on a discrete portion of this same parcel, at its northern edge. As their "lots" are clearly visible on aerial photographs of the parcel, this group of houses was marked at the center point of these lots. The gable-front houses stand on a narrow discontinuous portion of the parcel on the east side of US 258. They were therefore marked by a center point within this portion of the total parcel.

III. RECOMMENDATIONS AND CONCLUSIONS

A. Standing Resources

A total of 214 resources were visited during the updating of the Lenoir County survey, eight of which were newly surveyed. Of these, the three standing resources that are listed on the NR appear to continue to retain their significance and integrity (see tables at Section II.C above). Six of the eight resources that have been determined eligible for NR listing are also believed to continue to merit their DOEs. (The two demolished resources within the Pink Hill Historic District can no longer contribute to the district.) And 14 of the 21 resources included on the North Carolina SL are believed to still merit their positions on the list. Of the seven SL resources recommended for removal, six are no longer extant and one has been moved and altered.

Not one of these worthy-of-further-study, eligible-, or listed-resources was newly inventoried. The original 1993-1994 survey was extremely effective in identifying the county's most significant and intact standing historic resources. Additionally, these resources (unless no-longer-extant or moved and altered) are believed to have retained much or all of their integrity and significance.

The large majority of previously inventoried principal standing resources in the southern portion of the county have changed little since 1993-1994. There are two exceptions to this rule. About 20 percent of principal resources have been lost since that time and numerous outbuildings have been lost or have heavily deteriorated over the same period of time.

Due to technological advances since the early 1990s—including the development/improvement of county GIS databases, Access databases, scanning capabilities, and digital photography—many once difficult or time-consuming attributes of a resurvey of a well-studied county can now be relatively easily addressed. The mapping of resources and identification of tax parcel numbers is much easier, at least in counties such as Lenoir that have GIS databases. The HPO's Access database is more user-friendly (at the front and the back end) than its predecessor. Earlier photographs can be scanned in and attached to survey forms in the database, as can modern digital photographs. Resurvey, therefore, makes access to the most important information contained in the HPO's historic standing resources files far easier, particularly from locations outside of Raleigh and the western HPO office in Biltmore Forest.

Lenoir County, at least judging from its southern portion, provides a model for any future re-inventory of the large number of North Carolina's counties that were previously comprehensively inventoried. For these counties, an entire resurvey may not be called for. Rather, a resurvey of those resources that are listed in the NR, have been determined eligible through a DOE, or have been placed on the SL may identify all or almost all of the eligible and potentially eligible resources in the most cost-effective way. This can be supplemented by additional resurvey, as needed, to more fully identify the historic resources in a county or to fully comply with such federal regulations as 36 CFR 800 (Section 106) and the National Environmental Policy Act (NEPA). As the eligibility of resources changes over time, no survey or resurvey, unless constantly updated, can conclusively identify all notable or NR-eligible

resources. Therefore, a limited amount of resurvey will always be necessary. The depth of this resurvey, however, should vary depending on what work has been previously done in the county and what the resurvey is intended to accomplish.

The resurvey of Lenoir County provides information that will be useful in determining what resources merit further study as part of a county or municipal inventory or a Section 106 or NEPA-driven project. The previous survey activity in Lenoir County, particularly that of 1993-1994, did not result in the inventory (or even the identification via abbreviated coded entries on the USGS field maps) of every resource in the county that was 50 years old or older at the time of the survey. It is believed that no countywide survey, and no or virtually no municipal survey, results in the inventory of every such resource. In southern Lenoir County, although not all buildings were previously inventoried, every eligible or potentially eligible resource was previously identified. Therefore Section 106 and NEPA projects, like county and municipal inventory projects, may be successful even if they do not include survey of every resource that is 50 years old or older.

B. HPO Access Database

During this resurvey, a number of additions were made to the HPO's Access database that, though somewhat time consuming, add to the utility of the Lenoir County database. Three notable changes were made by the consultant, in consultation with the HPO, that make the database more inclusive and useful. As described in detail at Appendix A, in addition to updating the information in the database to reflect the current conditions of historic properties in Lenoir County, the structure of the database was modified. These modifications allow editors and users to upload and view narrative descriptions, historic photographs, and modern photographs for properties and districts. While different and perhaps better means may be developed to make these changes—the process developed for adding labeled modern photographs to the database is somewhat unwieldy—it is believed that the Lenoir County database has been improved as a result of this project. It is recommended that similar changes be contemplated for the database as a whole.

IV. APPENDICES

APPENDIX A

**Annotated Inventory List for Resources
South of and Along US 70 in Lenoir County, June 2010**

APPENDIX B

**Modifications made to the Lenoir County MS Access Database
How to Use the NC HPO Survey Database for Lenoir County with Added
Text and Photo Viewing Functionality
Database Modifications**

APPENDIX C

**Inserting Text from Historic Files
Creating Modern and Historic Picture Files**

APPENDIX A

Annotated Inventory List for Resources South of and Along US 70 in Lenoir County, June 2010

DEEP RUN QUAD

LR No.	Name	Presence	Status	Eligibility Comments
0003	Blackledge-Harper House		SL	NR nomination rejected in 1971 due to lack of integrity; alterations remain in place and it is therefore unlikely that it currently has sufficient integrity to merit NR listing
0005	Jesse Jackson House		NR	Appears to retain integrity and significance and to merit continued NR listing
0008	Dempsey Wood House		NR	Appears to retain integrity and significance and to merit continued NR listing
0585	Egbert Waller House			Not recommended for SL listing
0586	Woodington United Methodist Church Cemetery			Not recommended for SL listing
0588	Millard Waller House, I			Not recommended for SL listing
0593	Millard Waller House, II and Sawmill			Not recommended for SL listing
0695	Miller House	Gone post 1991		Not recommended for SL listing
0989	Davis-Fordham-Grady House	Gone post 1994	SL	Recommended for removal from SL; no longer stands on site
1006	Copeland-Humphrey House			Not recommended for SL listing
1024	Sutton-Barwick House and Outbuildings	Gone pre 1994		Not recommended for SL listing; packhouse/overseer's house remains
1028	House	Gone post 1994		Not recommended for SL listing

1029	Whitfield Grady House			Not recommended for SL listing
1030	Simpson Harper House	Gone post 1994		Not recommended for SL listing
1031	Davis-Robinson House		SL	Appears to retain sufficient integrity and significance to merit continued SL status
1032	Randall-Sutton Farm			
1033	Sutton-Ivey-Chadwick House	Gone post 1994		Not recommended for SL listing; one tobacco barn remains; two cemeteries to rear
1034	Ike Whitfield & Sons Store			Not recommended for SL listing
1035	Danny Shephard House			Not recommended for SL listing
1036	Jesse Jackson Croom House, I			Not recommended for SL listing
1037	Sandy Bottom Baptist Church			Not recommended for SL listing
1038	Webb Chapel United Methodist Church			Not recommended for SL listing
1039	Sandy Bottom Community			Not recommended for SL listing
1040	Croom Meeting House/Church		SL	Appears to retain sufficient integrity and significance to merit continued SL status
1041	Jesse Jackson Croom House, II	Gone post 1994		Not recommended for SL listing; one packhouse remains
1045	Mary Carr Davis House			Not recommended for SL listing
1046	(former) Moss Hill School			Not recommended for SL listing
1047	(former) Whitley's School			Not recommended for SL listing
1048	(former) George Holland Store	Gone post 1994		Not recommended for SL listing

1049	(former) Will F. Harper Store			Not recommended for SL listing
1050	(former) Piney Grove School			Not recommended for SL listing
1051	Jerry Sutton House	Gone pre 1994		Not recommended for SL listing
1052	Deleon Augustus Whitfield House	Gone post 1994		Not recommended for SL listing
1053	Dr. Rachel Davis House	Gone pre 1994		Not recommended for SL listing
1054	Horace Barwick House			Not recommended for SL listing
1055	House			Not recommended for SL listing
1056	House			Not recommended for SL listing
1057	William Christopher Smith Farm			Not recommended for SL listing
1058	Smith-Blizzard House			Not recommended for SL listing
1059	Randy Smith Tenant House	Gone post 1994		Not recommended for SL listing
1060	Deep Run Cotton Mill House			Not recommended for SL listing
1061	(former) Piccadilly Community			Not recommended for SL listing
1062	Deep Run Community			Not recommended for SL listing
1063	Davenport-Heath House			Not recommended for SL listing
1064	Davenport-Hill House			Not recommended for SL listing
1065	Rhodes Military Institute	Demolished in Kinston in 1909		Mismapped
1066	Adair Kennedy House			Not recommended for SL listing

1544	Woodington Elementary School			Not recommended for SL listing
1545	House			Not recommended for SL listing; at site labeled LR-1165 which had no file; inventoried with new number

COMFORT QUAD

LR No.	Name	Presence	Status	Eligibility Comments
1069	Miller-Nunn House	Gone pre 1994		Not recommended for SL listing
1070	Leroy & Elizabeth Reynolds House	Gone post 1994		Not recommended for SL listing
1071	Sam B. Taylor House			Not recommended for SL listing
1072	Preston Gooding House			Not recommended for SL listing
1225	Fred & Studie Mills Log House	Gone post 1994		Not recommended for SL listing

PINK HILL QUAD

LR No.	Name	Presence	Status	Eligibility Comments
0570	Pink Hill Historic District		DOE	Appears to retain integrity and significance and to merit continued DOE status; recommended that period of significance be changed from 1905-1935 to 1905-1941
0577	Noble's Mill Site			Not recommended for SL listing
0697	Joe Jones House			Not recommended for SL listing
0698	Harper-Cox House			Not recommended for SL listing
0699	Harper Family Cemetery			Not recommended for SL listing
0790	Richard Noble House	Moved post 1994	SL	Recommended for removal from SL; moved miles from original site within county and much altered

1042	Log House			Not recommended for SL listing
1043	Lutson Stroud Log House		SL	Appears to retain sufficient integrity and significance to merit continued SL status
1044	Leary-Stroud House		SL	Appears to retain sufficient integrity and significance to merit continued SL status
1068	“Pig” Noble House and Store			Not recommended for SL listing
1073	Wilbur Tyndall Tractor Museum, Grave House			Not recommended for SL listing
1075	Pink Hill United Methodist Church	Gone post 1994	SLD	Recommended as no longer a contributing resource to the Pink Hill Historic District (LR-0570); has been demolished
1076	(former) Pink Hill Elementary School	Original 1927 building gone	w/in DOE HD	Recommended as no longer a contributing resource to the Pink Hill Historic District (LR-0570);s surviving buildings fall outside the district’s current, and recommended extended, period of significance
1173	Melvin Jones House	Gone post 1994	SL	Appears to retain sufficient integrity and significance to merit continued SL status
1174	Ashe Davis House			Not recommended for SL listing
1175	Davis-Barnett House			Not recommended for SL listing
1176	Old Pink Hill Crossroads			Not recommended for SL listing
1177	Davis-Howard House			Not recommended for SL listing
1178	Jackson Hill House	Gone post 1994		Not recommended for SL listing
1179	(former) Pine Forest School	Gone post 1994		Not recommended for SL listing
1180	Vertie Noble House & Farm		SL	Appears to retain sufficient integrity and significance to merit continued SL status
1181	(former) Tyndall School			Not recommended for SL listing
1183	Noble-Hill House	Gone post 1994		Not recommended for SL listing

1184	Tillman House			Not recommended for SL listing
1226	Sally Taylor Log House			Not recommended for SL listing
1227	(former) Taylor School			Not recommended for SL listing
1228	Jonestown Crossroads			Not recommended for SL listing
1229	Wesley Jones Dairy			Not recommended for SL listing
1230	John F. Taylor House	Gone post 1994		Not recommended for SL listing
1231	Parker Howard House			Not recommended for SL listing
1232	(former) Pleasant Hill Masonic Lodge			Not recommended for SL listing
1233	House	Gone post 1994		Not recommended for SL listing
1234	Stroud House			Not recommended for SL listing
1235	Levi Carter Log House	Gone post 1994		Not recommended for SL listing
1236	House			Not recommended for SL listing
1237	Ernest Roscoe Maxwell House			Not recommended for SL listing
1238	(former) Quinn Store	Gone post 1994		Not recommended for SL listing
1239	Steven Silas Turner House			Not recommended for SL listing
1240	Stroud-Spence House & Store	Gone post 1994		Not recommended for SL listing
1241	Johnny Hill House			Not recommended for SL listing

RIVERMONT QUAD

LR No.	Name	Presence	Status	Eligibility Comments
0582	(former) Deep Run Store	Gone post 1991		Not recommended for SL listing
0583	Col. John Williams Family Cemetery			Not recommended for SL listing
0584	Egbert Waller Tenant House	Gone post 1991		Not recommended for SL listing
0857	Moseley-Stroud House		SL	Appears to retain sufficient integrity and significance to merit continued SL status
1067	Howard-Williams House			Not recommended for SL listing
1185	Wooten- Whaley House		SL	Appears to retain sufficient integrity and significance to merit continued SL status
1186	Robert Bond Vause House		SL	Not recommended for SL listing
1187	House	Gone post 1994		Not recommended for SL listing
1188	House			Not recommended for SL listing
1192	Southwood School	Gone June 1994		Not recommended for SL listing
1193	Elliott S. Russell House			Not recommended for SL listing
1194	King's Chapel Church of Christ			Not recommended for SL listing
1195	Elijah Loftin Farm (Mossy Oaks)		SL	Appears to retain sufficient integrity and significance to merit continued SL status
1196	Jim Stroud House			Not recommended for SL listing
1197	Cobb-King-Humphrey House		SL	Appears to retain sufficient integrity and significance to merit continued SL status
1198	Furney Stroud Crossroads House			Not recommended for SL listing
1199	Paul Williams House & Waller School			Not recommended for SL listing

1200	House			Not recommended for SL listing
1201	Brown-Gates House (Sears & Roebuck)			Not recommended for SL listing
1202	Thomas Walter Stroud House & Farm			Not recommended for SL listing
1203	Kelly's Millpond Site		DOE	Appears to retain integrity and significance and to merit continued DOE status
1204	Joseph Williams House			Not recommended for SL listing
1205	Vine Swamp Church of Christ			Not recommended for SL listing
1206	Elm Grove Crossroads			Not recommended for SL listing
1207	(former) Lynwood School			Not recommended for SL listing
1208	Coleman-Wooten -Williams House		SL	Appears to retain sufficient integrity and significance to merit continued SL status
1209	House	Gone post 1994		Not recommended for SL listing
1210	(former) Vine Swamp School			Not recommended for SL listing
1211	Pine Grove Church			Not recommended for SL listing
1212	Jarman Becton House			Not recommended for SL listing
1213	Simpson Waller House		SL	Appears to retain sufficient integrity and significance to merit continued SL status
1214	Charlie Stroud House			Not recommended for SL listing
1215	Bill Stroud House			Not recommended for SL listing
1216	Williams House			Not recommended for SL listing
1217	Harold Lee Store			Not recommended for SL listing
1218	Hunter-Harper Log House			Not recommended for SL listing

1219	(former) New Hope School			Not recommended for SL listing
1220	Alonzo Daughety House			Not recommended for SL listing
1221	Church			Not recommended for SL listing
1222	House	Gone post 1994		Not recommended for SL listing
1246	Parrott House	Gone pre 1994		Not recommended for SL listing
1435	Kinston Battlefield Area 4		NR	Archaeological site, so not assessed
1435	Kinston Battlefield Area 3		NR	Archaeological site, so not assessed
1435	Kinston Battlefield Area 2		NR	Archaeological site, so not assessed
1546	Stroud Hipped-roof Houses			Not recommended for SL listing
1547	Stroud Gable-front Houses			Not recommended for SL listing
1548	Sutton House			Not recommended for SL listing
1549	Demaris Stroud House			Not recommended for SL listing
1550	Kellys Pond Fire Lookout Tower			Not recommended for SL listing

SEVEN SPRINGS QUAD

LR No.	Name	Presence	Status	Eligibility Comments
0979	Whitfield House	Gone ca. 1994		Not recommended for SL listing moved to Wayne Count
0982	Raymond Jones House	Gone post 1994	SL	Recommended for removal from SL; no longer stands on site
0984	Marcus Sutton House			Not recommended for SL listing
0985	Sutton-Ivy-Dawson House	Gone post 1994	SL	Recommended for removal from SL; no longer stands on site

0986	Clennan T. & Paulene Sutton House			Not recommended for SL listing
0987	Wood-Sutton House			Not recommended for SL listing
0988	Benjamin Franklin Sutton House	Gone post 1994		Not recommended for SL listing
0990	(former) Strabane Grocery Store			Not recommended for SL listing
0991	Zenobia & George Fields House			Not recommended for SL listing
0992	Hines-Warters-Adkinson House			Not recommended for SL listing
0993	Rockford Chapel Church			Not recommended for SL listing
0994	Crown Station Intersection			Not recommended for SL listing
0995	Benjamin Franklin Herring House			Not recommended for SL listing
0996	James Brown House			Not recommended for SL listing
0997	Williams-Barwick House	Gone post 1994		Not recommended for SL listing
0998	(former) Daly's Chapel Free Will Baptist Church	Old church building gone post 1994	SL	Recommended for removal from SL; no longer stands on site
0999	Shivar Store			Not recommended for SL listing
1000	Nunn-Quinn-Barwick House	Gone post 1994		Not recommended for SL listing
1001	Richard Rouse House	Gone ca. 1985		Not recommended for SL listing
1003	Eric Alonzo Rouse House	Gone post 1994		Not recommended for SL listing

1004	Davis House			Not recommended for SL listing
1005	Johnny Hill House	Gone post 1994		Not recommended for SL listing
1008	Wiley Joel Rouse House		SL	Appears to retain sufficient integrity and significance to merit continued SL status
1009	Leroy Quinn House	Gone post 1994		Not recommended for SL listing
1010	Union Baptist Church			Not recommended for SL listing
1011	Myrtilla Elmore House	Gone post 1994		Not recommended for SL listing
1012	Moss Hill Elementary School		SL	Appeared at time of resurvey to retain sufficient integrity and significance to merit continued SL status, but due to additions to and reconstruction of campus buildings when inventoried, should be reassessed after all work is completed
1013	Sam Earl Rouse House			Not recommended for SL listing
1014	Arthur & Clemmie Rouse House/Post Office	Gone post 1994		Not recommended for SL listing
1015	Jones-Ball House			Not recommended for SL listing
1016	(former) Holy Innocents Parish School			Not recommended for SL listing
1017	Davis Mill			Not recommended for SL listing
1018	H. William Davis House			Not recommended for SL listing
1019	Liddell Crossroads/Liddell Cash Supply			Not recommended for SL listing
1020	Noah Rouse House			Not recommended for SL listing
1021	Outlaw-Rouse House			Not recommended for SL listing

1022	Stroud- Chambers Dovetail Plank House	Gone late 1980s		Not recommended for SL listing
1023	House			Not recommended for SL listing
1025	Frank Grady House			Not recommended for SL listing
1026	Jim Grady Store			Not recommended for SL listing
1027	Betty Wooten House (Davis -Wooten House)	Gone post 1994	SL	Recommended for removal from SL; no longer stands on site
1247	Burns Place (Col. N B Whitfield) House	Gone in 1970s		Not recommended for SL listing
1551	Holy Innocents Episcopal Church			Not recommended for SL listing

LAGRANGE QUAD

LR No.	Name	Presence	Status	Eligibility Comments
0953	House			Not recommended for SL listing
0954	(former) Jenny Lind Store			Not recommended for SL listing
0955	Hill-Sutton Farm			Not recommended for SL listing
0956	Nathan George Sutton House			Not recommended for SL listing
0959	House			Not recommended for SL listing
0983	Saint Matthew Free Will Baptist Church			Not recommended for SL listing
1002	White Oak Grove Free Will Baptist Church			Not recommended for SL listing

FALLING CREEK QUAD

LR No.	Name	Presence	Status	Eligibility Comments
0001	Cedar Dell		NR	Appears to retain integrity and significance and to merit continued NR listing

0700	Henry Loftin Herring Farm		SL DOE	Appears to retain integrity and significance and to merit continued DOE status; however, is threatened by deterioration
0702	Trinity United Methodist Church			Not recommended for SL listing
0703	Dr. James M. Parrott House		DOE	Appears to retain integrity and significance and to merit continued DOE status
0786	Herring-Hodges House	Gone late 1980s		Not recommended for SL listing
0896	Pruitt House			Not recommended for SL listing
0923	Rouse-Capps House			Not recommended for SL listing
0926	James Warters House			Not recommended for SL listing
0927	James A. & Laura McDaniel House ("Maxwood")		SL DOE	Appears to retain integrity and significance and to merit continued DOE status
0948	(former) Beaman Grocery/ Service Station			Not recommended for SL listing
0950	House			Not recommended for SL listing
0951	House	Gone post 1994		Not recommended for SL listing
0952	Jerry & Agnes Sutton Farm			Not recommended for SL listing
0957	Bright Kennedy House			Not recommended for SL listing
0958	House			Not recommended for SL listing
0962	Sutton-Turnage House			Not recommended for SL listing
0967	Parrott- Coleman Farm			Not recommended for SL listing
1189	Kennedy Memorial Home		DOE	Appears to retain integrity and significance and to merit continued DOE status
1255	Becton Herring House	Gone post 1994		Not recommended for SL listing

APPENDIX B

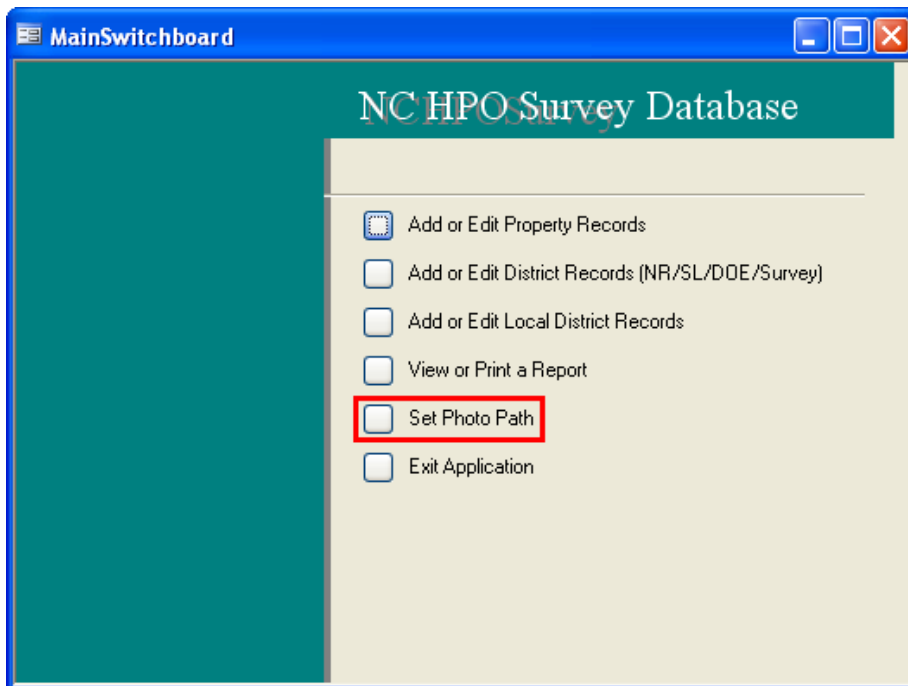
Modifications made to the Lenoir County MS Access Database

As part of the Kinston Bypass Project and Archaeological Survey Update project, the Lenoir County NC HPO Survey Database was updated to reflect current conditions of historic properties in Lenoir County. In addition to updating this information, the structure of the database was modified. These modifications allow editors and users to upload and view narrative descriptions, historic photographs, and modern photographs for properties and districts.

Instructions for using the additional functionality of the database are provided in Appendix A. Also, a detailed list of exactly what was modified in the database structure is provided in Appendix B.

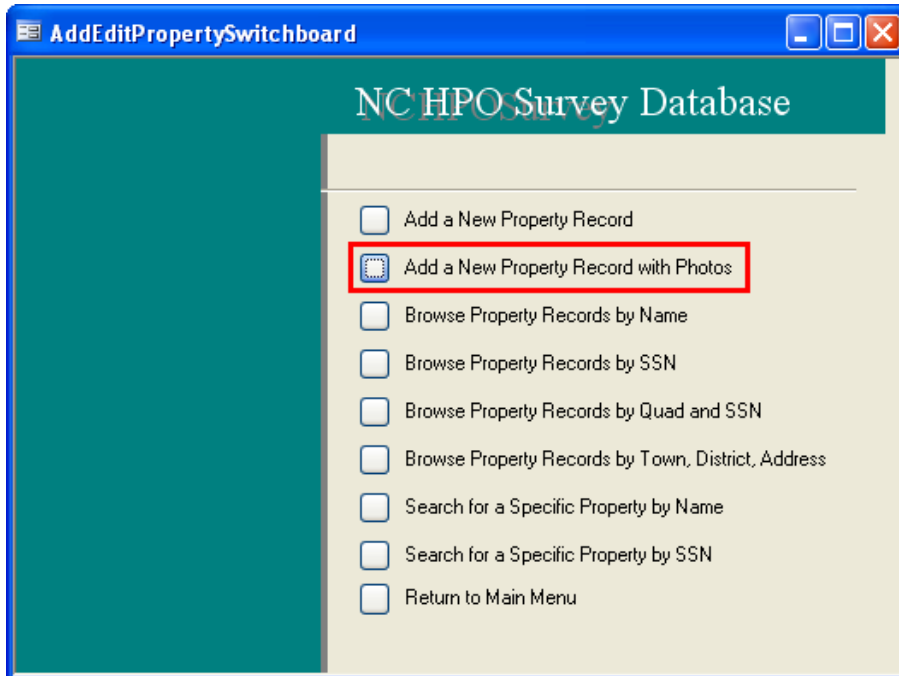
Main Switchboard

The **Main Switchboard** was updated to include a button to set the path where photographs are stored on the user's local server. The database will use this path to search for narrative text, historic photo, and modern photo files.



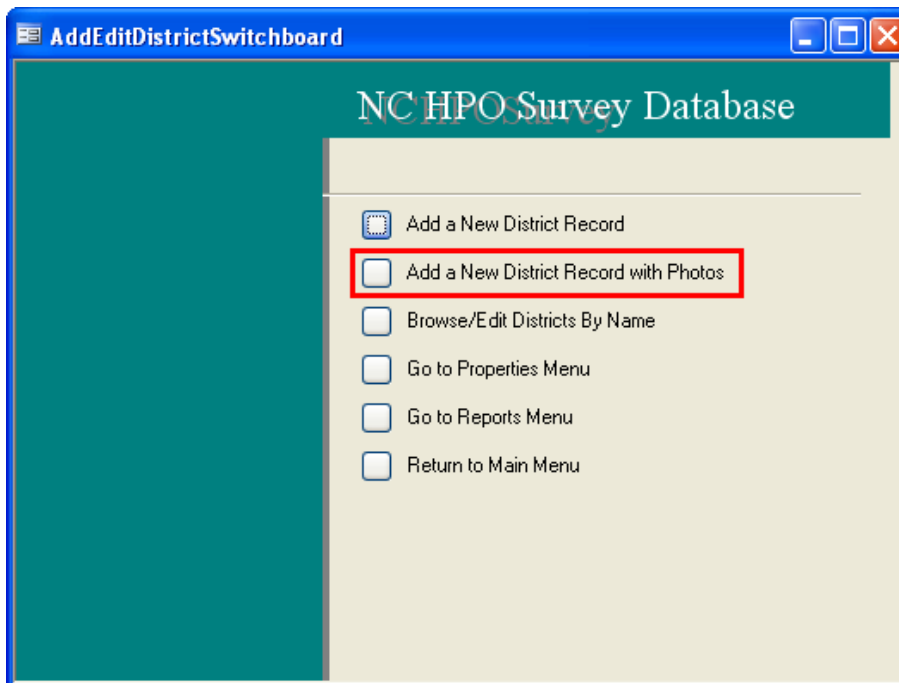
Add or Edit Property Records Switchboard

Add a New Property Record with Photos functionality has been added to this switchboard. This function is used to add new property records and their associated narrative texts, historic photos, and modern photos. The original functionality of **Add a New Property Record** button was not modified.



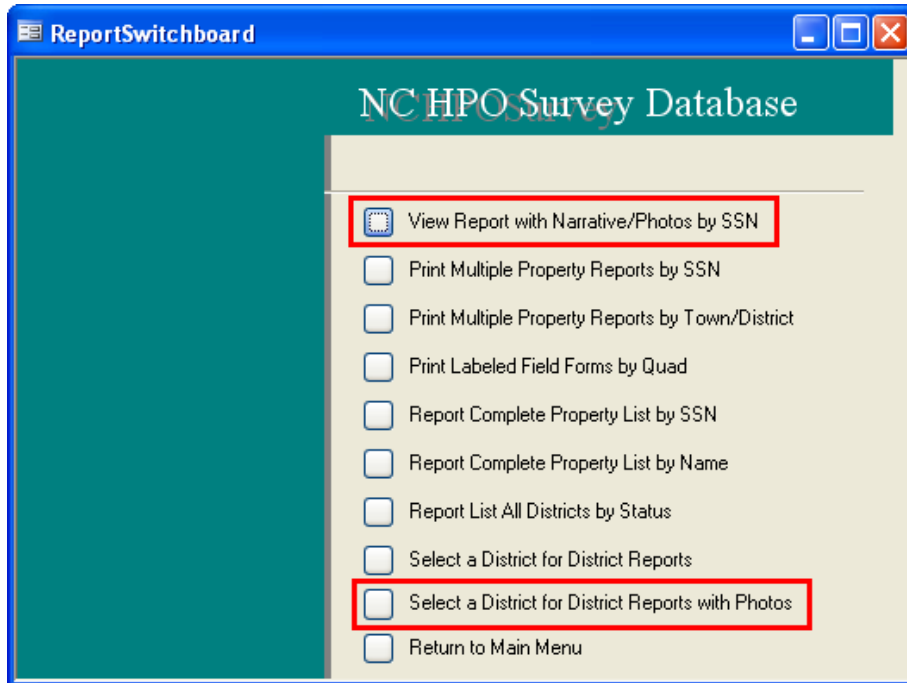
Add or Edit District Records Switchboard

The **Add or Edit District Records Switchboard** was modified to include a button for the user to **Add a New District Record with Photos**. This functionality allows the user to add a new district record along with narrative text, historic photos, and modern photos. The original functionality of Add a New District Record was not changed.



Report Switchboard

The Report Switchboard has been updated to include two additional buttons for functionality.



First, a button for View Report with Narrative/Photos by SSN has been added. This function allows the user to search for a property by SSN, view the report as well as text and photos that originally accompanied the report. Modern photos, captured during this project, are also available.

The second function, Select a District for District Reports with Photos, allows users to search for a district report by DSSN, view the report as well as text and photos that originally accompanied the report. Modern photos, captured during this project, are also available.

How to Use the NC HPO Survey Database for Lenoir County with Added Text and Photo Viewing Functionality

1.0 Introduction

URS Corporation modified the Lenoir County portion of the NC HPO Survey Database to display images of narrative text and both historic and modern photographs. Existing property narratives and photographs were scanned into PDF files. The user can access these PDF files using this database.

Historic properties in Lenoir County were resurveyed in 2010 under the Kinston Bypass Project and Archaeological Survey Update projects. During this process, modern photographs were captured. These photographs have also been stored as PDF files and are accessible through the database.

Section 0 of this document describes the functionality of the linked photos included in the Lenoir County database. This section also outlines methods used to add new photos to existing property records and add new property records and associated photos. Section 0 provides instructions for adding linked photo capability to other databases. Appendix A outlines the specific changes that were made to tables, queries, forms, reports, and modules.

2.0 Linked Photo Database Capabilities

This section describes the file structure and system requirements necessary to utilize linked photos within the database. First, instructions on accessing photos which are already linked are provided. Instructions describing how to add photos to existing historic properties are provided next. Finally, instructions describing how to add photos to new historic properties are provided.

2.1 Database Requirements

The Lenoir county database has several requirements in order to work properly:

1. The file called **MouseHook.dll** must be in the same folder as the database.
2. The file called **NIA.JPG** must be in the same folder as the PDF files.
3. All PDF files (text, historic, and modern photos) must be placed in the same folder.
4. A PDF viewer program, such as Adobe Acrobat, must be installed on the computer.

2.2 Set the Photo Path

Open the database⁵ and from the Main Switchboard, Choose **Set Photo Path**.

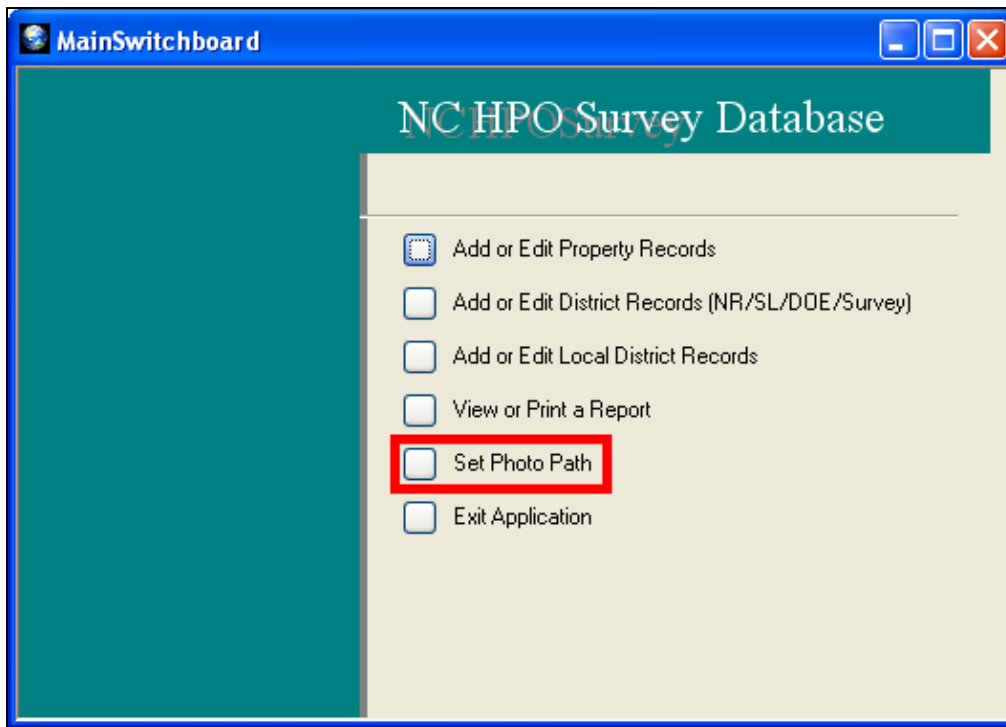


Figure 1. Choose Set Photo Path from the Main Switchboard.

You will be prompted to enter the file path to the folder containing the text and photo PDF files. Enter the path and click **Save**.

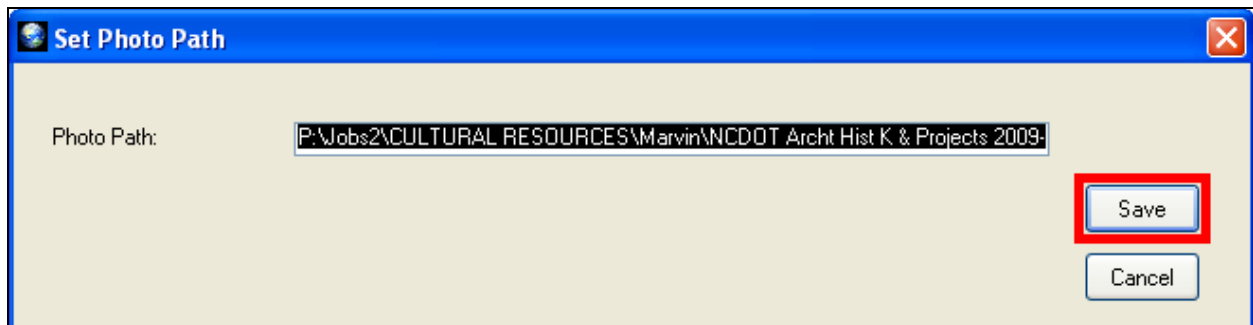


Figure 2. Enter the path and click Save.

Setting the photo path tells the database where the PDF files are located. If the PDF files are moved, or the path name changes, the photo path must be re-set prior to viewing the PDF files.

⁵ Depending on individual computer settings, you may be prompted with a Security Warning. Click **Open** to continue.

2.3 View Text and Photos by Property Report

Open the database and from the Main Switchboard, choose **View or Print a Report**. On the next switchboard, the Report Switchboard, click **View Report with Narrative/Photos by SSN**.

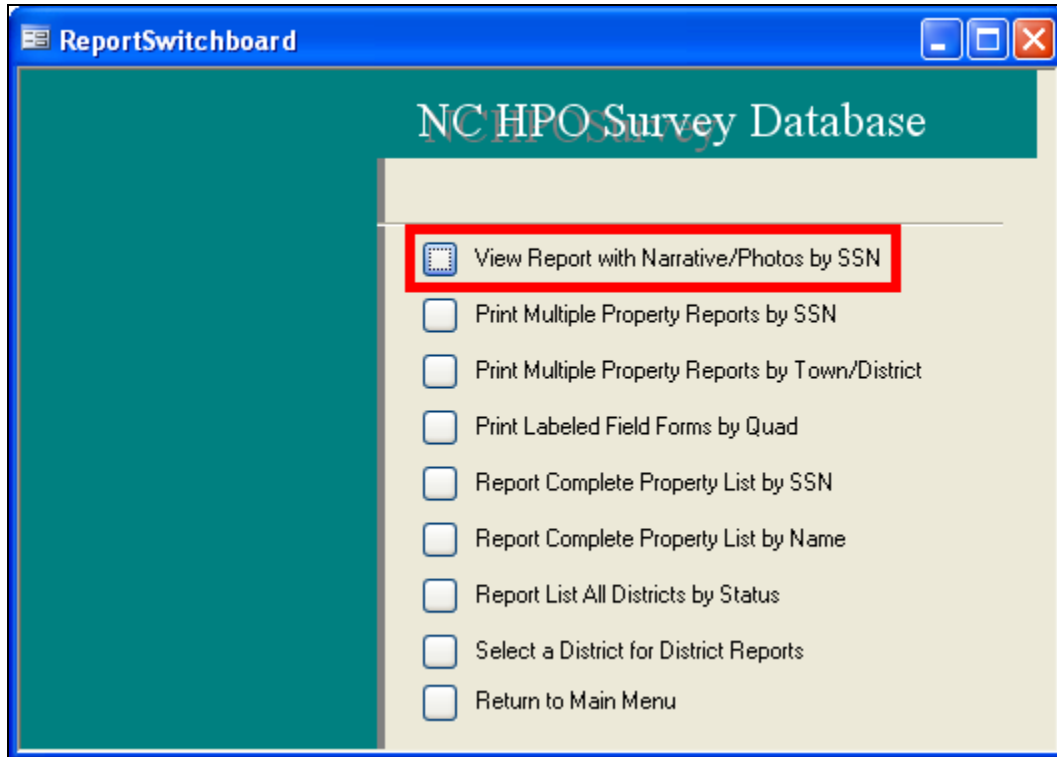


Figure 3. On the Report Switchboard, click View Report with Narrative/Photos by SSN.

You will be prompted to enter a valid SSN number. Enter an SSN number and click **OK**.

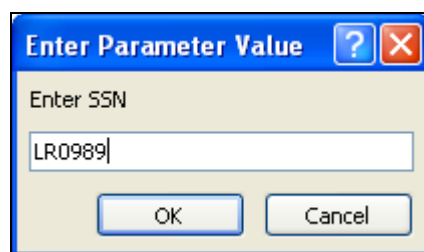


Figure 4. Enter a valid SSN number and click OK.

The Property Report will open in a new window as shown in Figure 5.

rptPropertyReport-Multiple-SSN

North Carolina State Historic Preservation Office
Historic Property Survey Summary
 County: **Lenoir**
 SSN: **LR0989** Block#

Quid: Deep Exam
 PIN:
 X Y:
 DOI Project#:
 OSA#

Update Mo: Yr:
 No Alt Alt De+ Rehab
 Removed Outbidg Loss
 No Acc. Not Final File Missing
 Newly ID'd Needs Esch.

Property Name: **Davis-Fordham-Grady House**
 Street or 911 Address:
 Location Description: **N side SR 1152, 0.5 mi SE of jct w/ SR 1154**
 Town/vicinity: **Wootens Crossroads vicinity**
 District: **None 0**
 District Date: NR Date: SL Date: DOI Date:
 Local District:

Recommended for SL Study List SL Date: **10/13/1994** NR NR Date: NR #: none
 DOE DOI Date:
 DOE Type: Local Status: Ownership:

Principal Resource Material Integrity: **High** Condition: **Deteriorated** Location Integrity: **Original**

Architectural Date: Date(s): ca. 1825
 Major Style Group(s) **Federal**
 Construction: **Timber Frame**
 Ext. Material: **Weatherboard/Plank** Lath/Cowling: **None**
 Height: **1 1/2 story** Roof: **Side Gable** Plan: **Hall-parlor** Core Form (Domestic): **Double File**
 Design Source and attribution: **Not specified**

Main Theme: **Architecture** 2nd Theme:
 Group Association: **Not Specified** Religious Affiliation:
 Historic Function: **Domestic - single dwelling**

Written Summary:

Cowbuildings/Features

Feature Type	Material	Circle Date	Condition	Contrib
Barn	Frame	1890-191	Deteriorat	
Tobacco Barn	Frame	1890-191	Deteriorat	
Kitchen	Frame	ca. 1825	Deteriorat	

Actions

Tuesday, January 12, 2010

Page: 1

Figure 5. The Property Report will open in a new window.

If PDF files for text, historic photos, and modern photos are available, they will be visible within the database window⁶. The example in Figure 6 shows the Narrative Text PDF for LR0989.

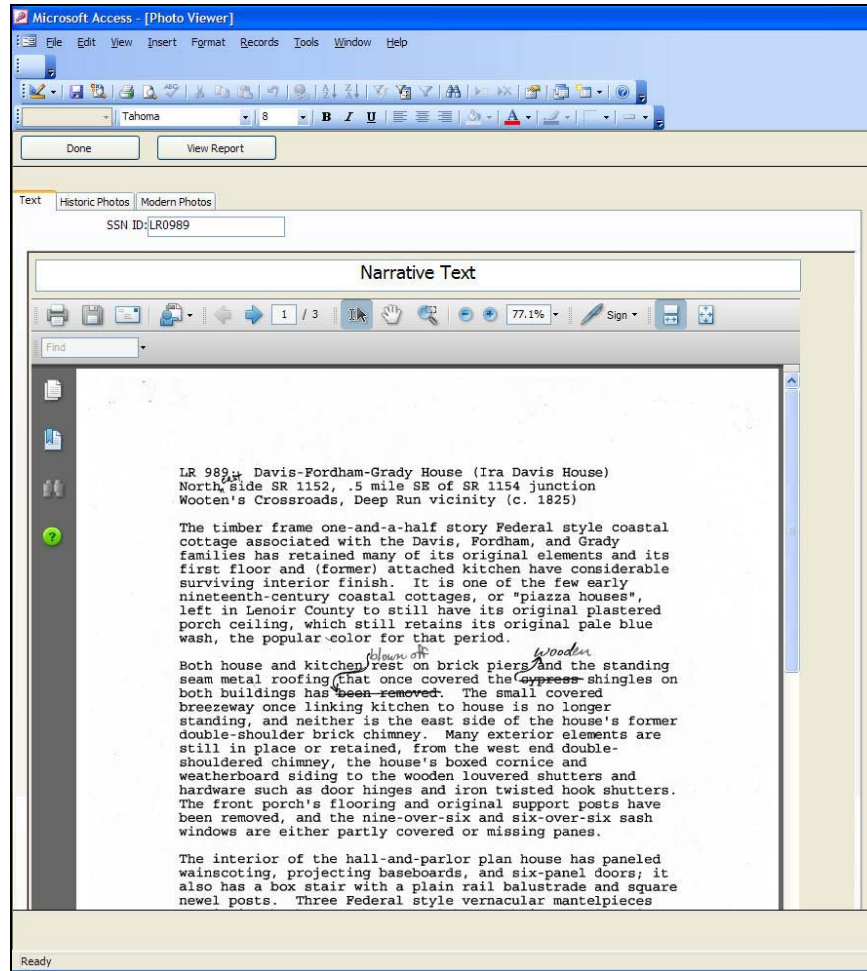


Figure 6. Narrative Text for LR0989.

Click the tabs to view **Historic Photos** and **Modern Photos**. You can use the tools on the PDF toolbar to print, save, e-mail, zoom, pan, and perform other PDF functions.

⁶ Depending on the version of PDF software, the text, historic photos, and modern photo PDF files may open in separate windows. PDF tools to print, save, e-mail, zoom, pan, etc. will still be available.

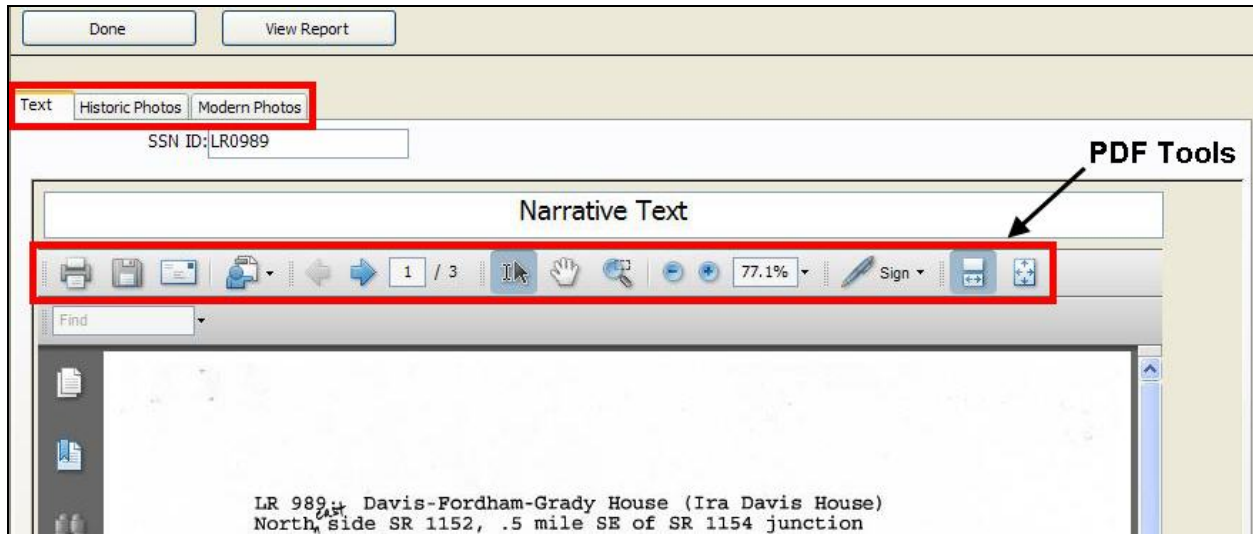


Figure 7. Click the Tabs for Historic Photos and Modern Photos to view.

When you are finished viewing the PDFs, click **Done**.

2.4 Add Text and Photos to New or Existing Property Records


1. From the Main Switchboard, click **Add or Edit Property Records**.
2. Next, click **Add a New Property Record with Photos**. If you are adding a new property record, enter that information as needed on the form, then proceed to step 4. If you are adding text and photo PDF files to an existing property record, continue to step 3.
3. On the top right-hand side of the form, enter a SSN number and click **Find** . The example shown in Figure 8 uses LR0588. The form will populate with information from the chosen SSN.

Figure 8. Enter a SSN number and click Find.

4. Scroll to the bottom of the form. There are three new data entry areas at the bottom of the form, one for Text PDF files, on for Historic Photo PDF files, and one for Modern Photo PDF files. Provide a **Title** for the Text PDF and click **Open**.

Figure 9. Provide a title and click Open.

5. Navigate to the location that contains the file, click it and then click **Open**. The PDF is now associated with the property record in the database.

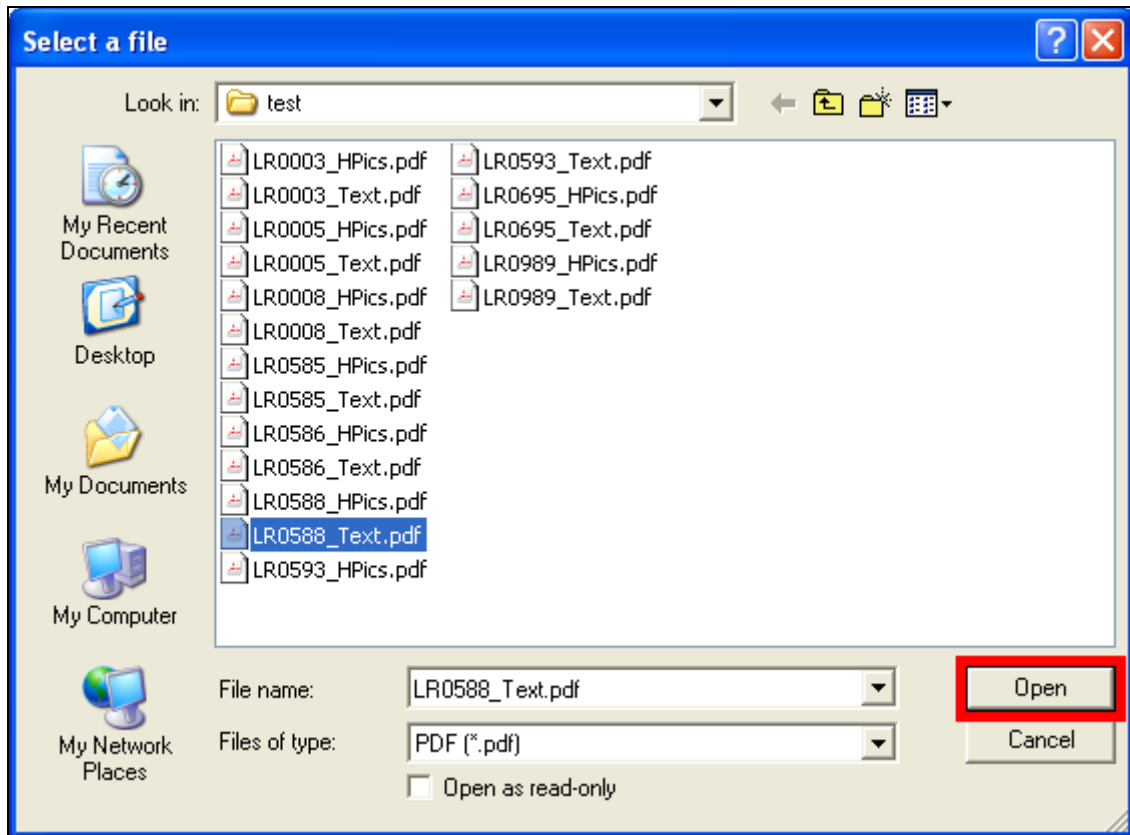


Figure 10. Choose the desired file and click Open.

6. Repeat this process to add Historic Photo and Modern Photo PDF files. Be sure to save the record before moving on. The PDF files are now available for viewing under View Report with Narrative/Photos by SSN on the Report Switchboard.

3.0 Adding Linked Photos Capability to other Databases

Modifications to tables, queries, forms, reports, and modules were performed to incorporate text and photo PDFs into the functionality of the database. These modifications can be applied to other databases by simply copying and pasting certain tables, queries, forms, reports, and modules from the supplied database to the target database.

Open the supplied database and the target database. View the Tables which are included with the supplied database. Right-click on a table, such as Switchboard Items, and choose **Copy**.

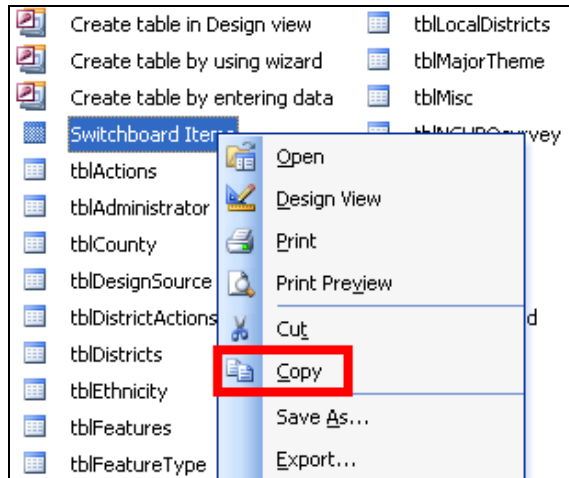


Figure 11. In the supplied database, right-click a table and choose Copy.

Next, navigate to the target database and view the Tables object. Right-click and choose Paste.

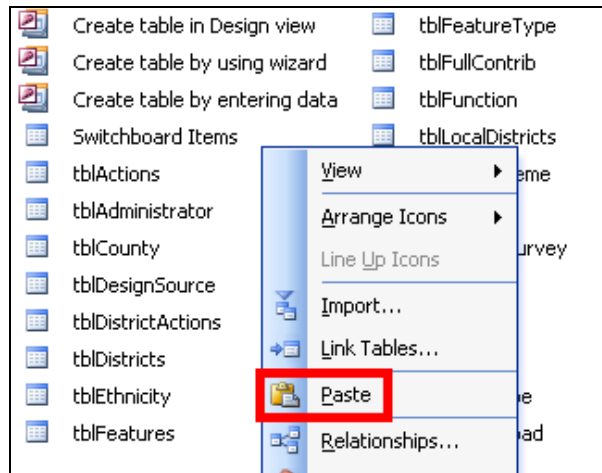


Figure 12. In the target database, right-click and choose Paste

You will be prompted to supply a name for the table. Enter the name of the table as it appeared in the supplied database and click **OK**.

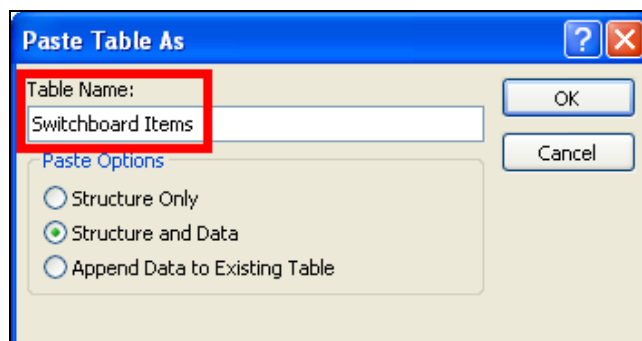


Figure 13. Enter a name and click OK.

Repeat this process for all tables, queries, forms, reports, and modules shown in the images below.

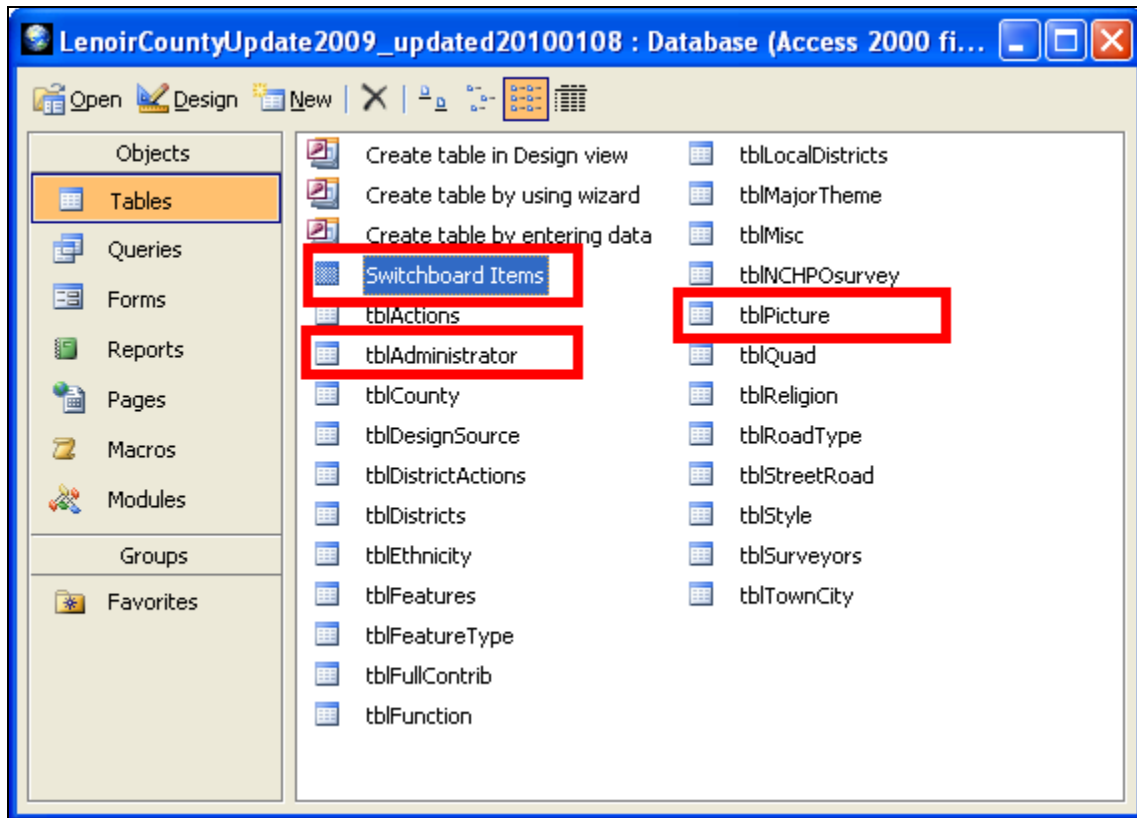


Figure 14. Copy these Tables from the supplied database to the target database.

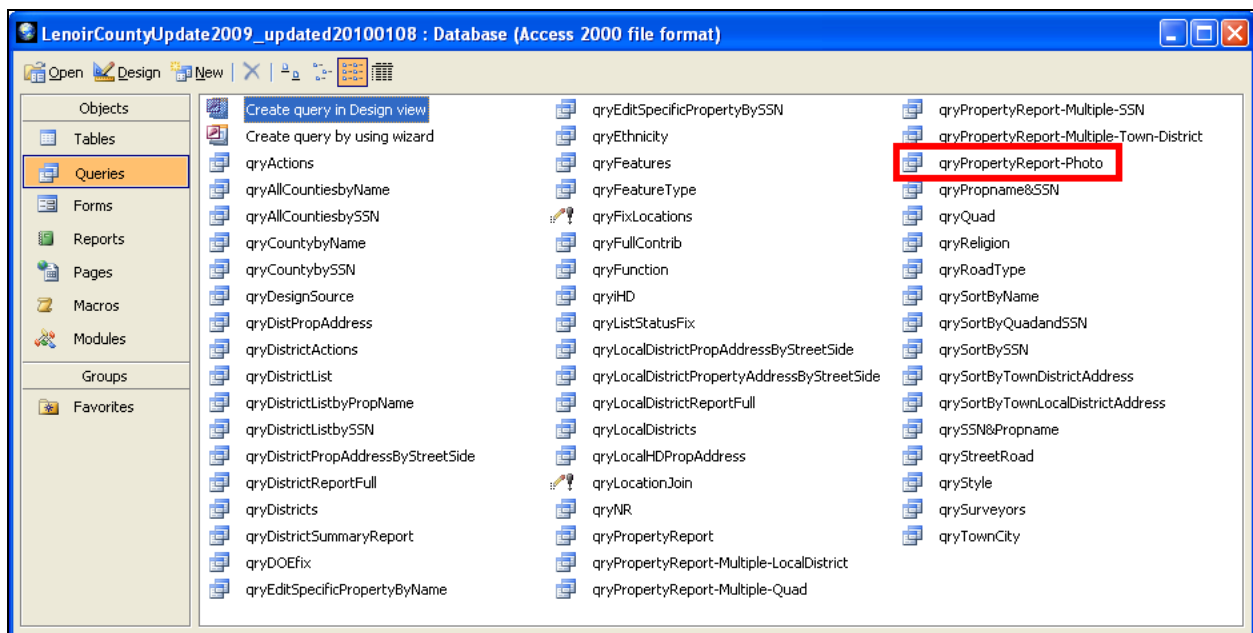


Figure 15. Copy these Queries from the supplied database to the target database.

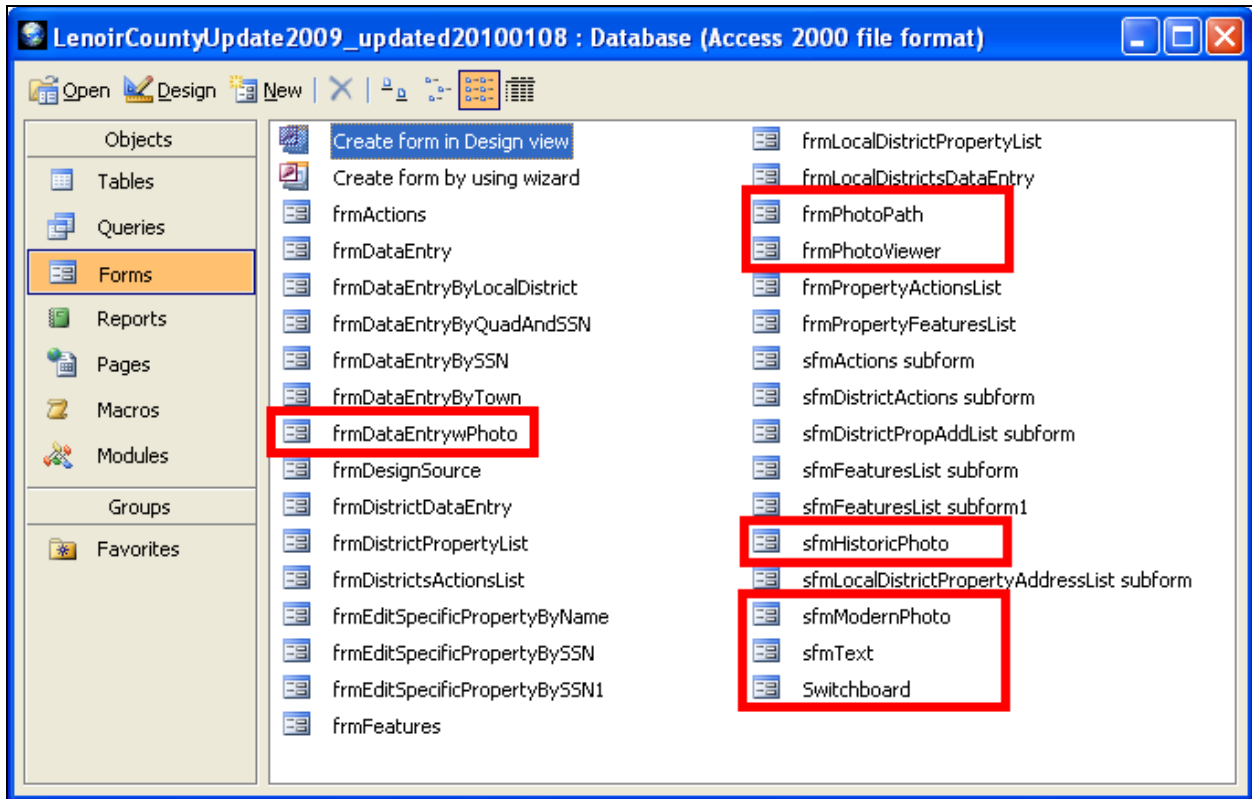


Figure 16. Copy these Forms from the supplied database to the target database.

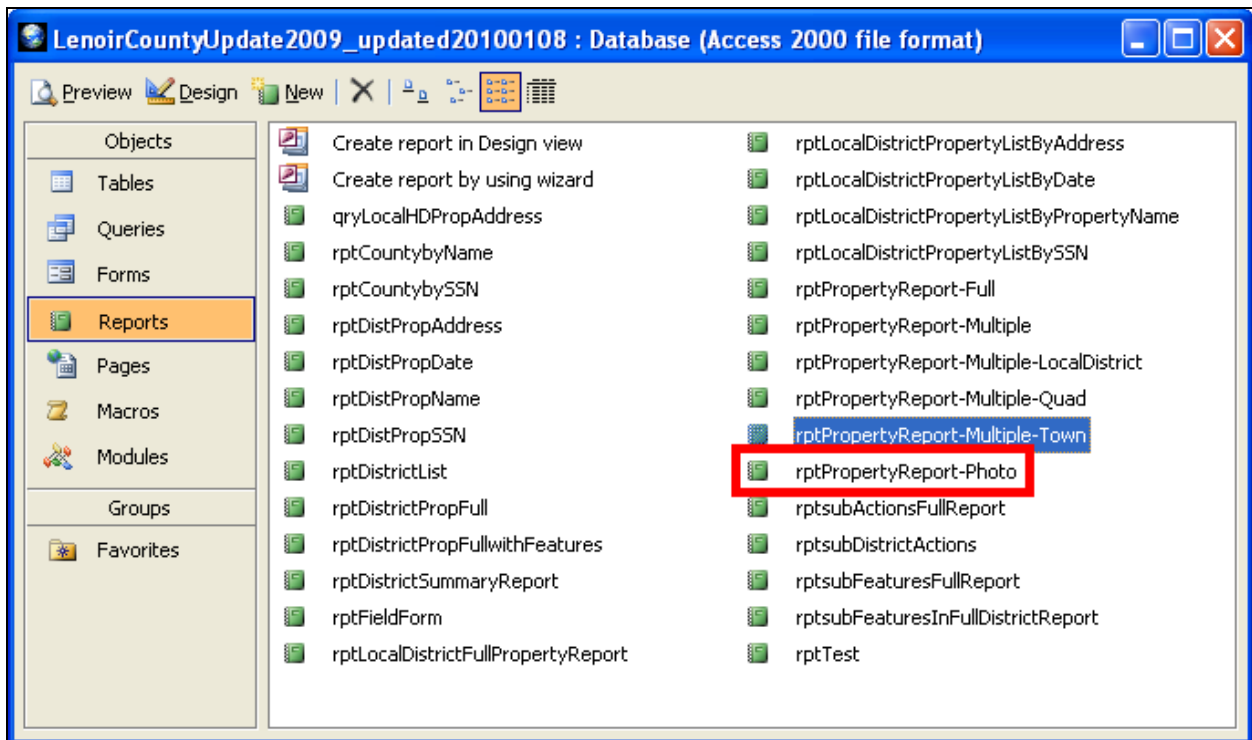


Figure 17. Copy these Reports from the supplied database to the target database.

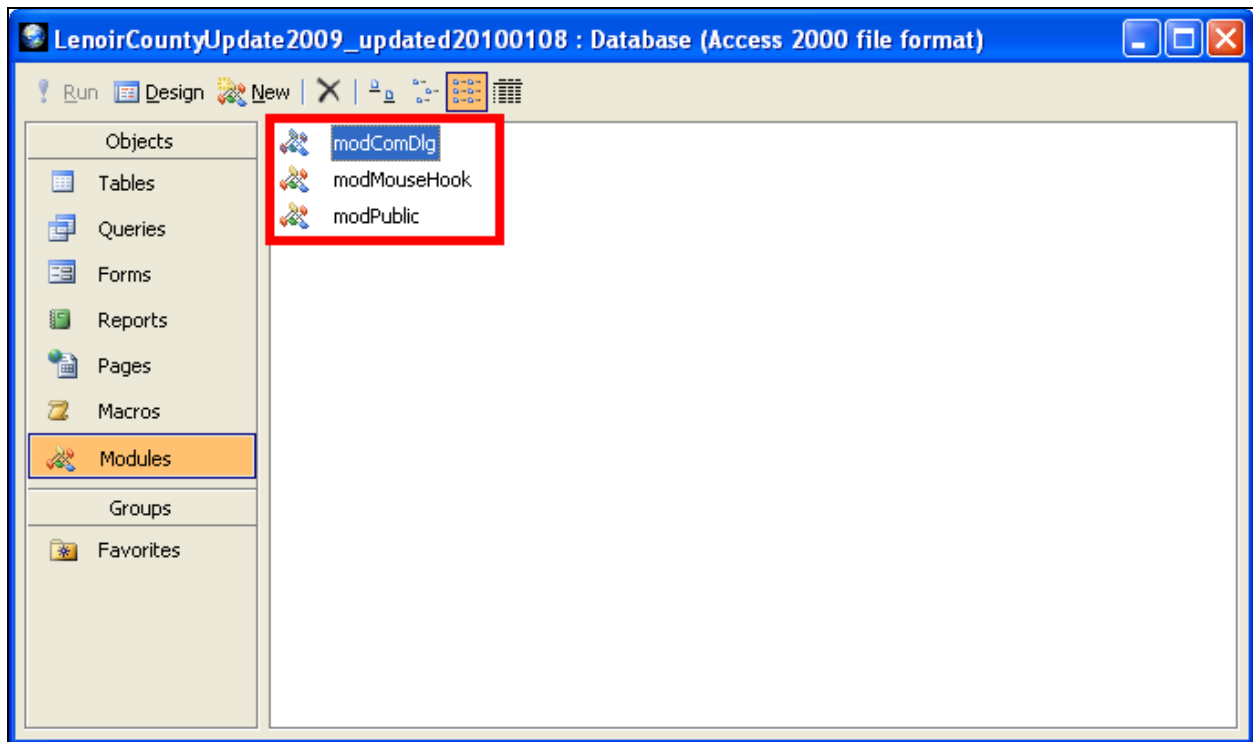


Figure 18. Copy these Modules from the supplied database to the target database.

4.0 Summary

Once you have finished viewing, adding, or editing records and PDF files, save your progress. Then, close any open data entry forms, reports, or PDF files you may have open. On the switchboard, click **Return to Main Menu**. Then, click **Exit Application** from the Main Switchboard and the database will close.

The Lenoir County portion of the NC HPO Survey Database has been updated to display images of narrative text and both historic and modern photographs. Narrative text and historic photos were scanned into PDF files and can be linked to the database using instructions provided in this document. Modern photos for properties included in the first portion of the 2010 Kinston Bypass Project and Archaeological Survey Update project were also scanned into PDF files. Future survey efforts in Lenoir County will benefit from having such valuable information stored in a format that is easy to access, use, and print. The procedures described in this document should be used to maintain new property records as they are encountered during future survey efforts.

Database Modifications

Tables:

- Added Table [tblAdministrator] to track the Photo Path
 - [Classify1] field designates the record a photo path, while [Value1] field contains the actual path of the photo
- Modified Table Switchboard Items to add additional functionality
 - Added 3 new records for each of the new buttons
 - Modified existing records to ensure correct order
- Added Table [tblPicture] to store file names for images
 - [SSN] field contains unique SSN number, [TextTitle] field contains title for text photos, [HistoricTitle] field contains title for historic photos, [ModernTitle] field contains title for modern photos, [TextFile] field contains file name for text photos, [HistoricFile] field contains file name for historic photos, [ModernFile] field contains file name for modern photos

Forms:

- Added Form [frmPhotoPath] allowing user to enter the storage location of the photos
 - Stores results in [tblAdministrator]
 - Must be run to allow photos to be loaded or viewed
- Modified Form [Switchboard] adding new buttons and code as needed
 - Added [Set Photo Path] button on MainSwitchboard
 - Added [View Record By SSN] button on ReportSwitchboard
 - Added combo box which activates when ReportSwitchboard is active
 - Added [Add a New Property Record with Photos] button to AddEditPropertySwitchboard
 - Modified code to allow button events to function property
- Added Form [frmDataEntrywPhoto] allowing a user to upload photos for each SSN.
 - Modified [frmDataEntry] with additional functionality

- After entering a title and navigating to the appropriate file, access with prompt the user to verify upload. Once the upload is completed the record will be updated, there is no need to save after each upload
- Allows user to upload a pdf or image file for each of the photo types
- Stores all information in [tblPicture]
- If an SSN is not already in [tblPicture] the form will create one and allow photos to be uploaded
- Added a find button which will return the record for the corresponding SSN number
- Code was modified to be consistent with changes.
- Added Form [sfmText] to display text photos
 - Is a subform to frmPhotoViewer, displays text photos
 - Added Form [sfmHistoricPhoto] to display historic photos
 - Is a subform to frmPhotoViewer, displays historic photos
 - Added Form [sfmModernPhoto] to display modern photos
 - Is a subform to frmPhotoViewer, displays modern photos
 - Added Form [frmPhotoViewer] allowing the user to view all three types of photos
 - Parent form to three child forms
 - Utilizes the value passed in the Switchboard form to display results for user selected SSN number

Reports:

- Added Report [rptPropertyReport –Photos] Allowing the user to display a single SSN record with corresponding photos.

Modules:

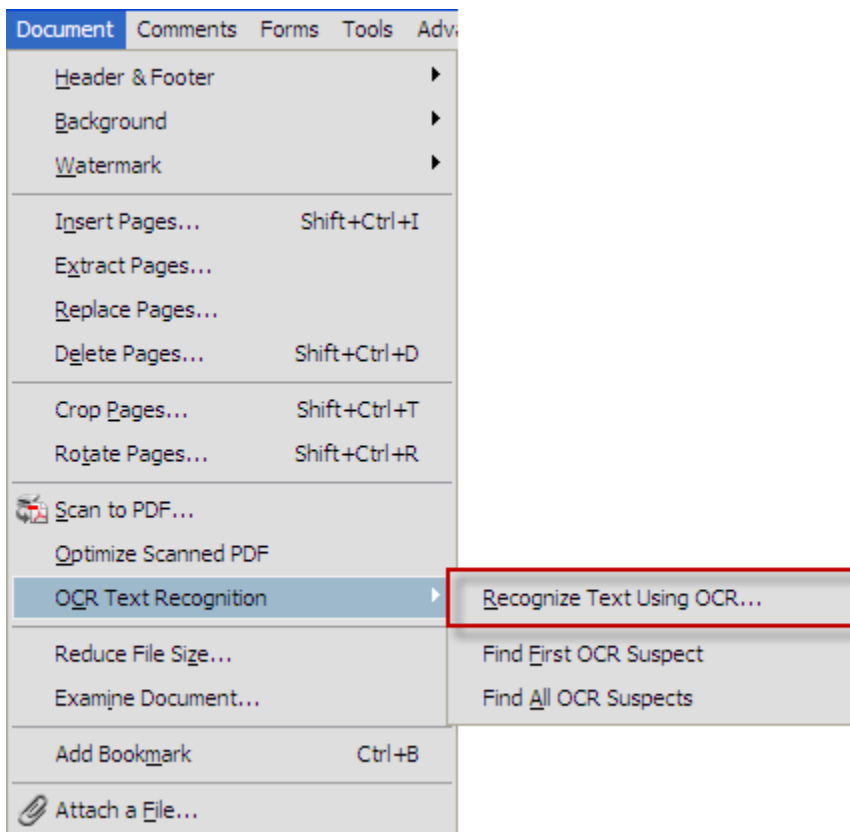
- Added Module [modComDlg] which administers the open file dialog
- Added Module [modMouseHook] which controls the mouse wheel
- Added Module [modPublic] which sets a global variable for the photo path

APPENDIX C

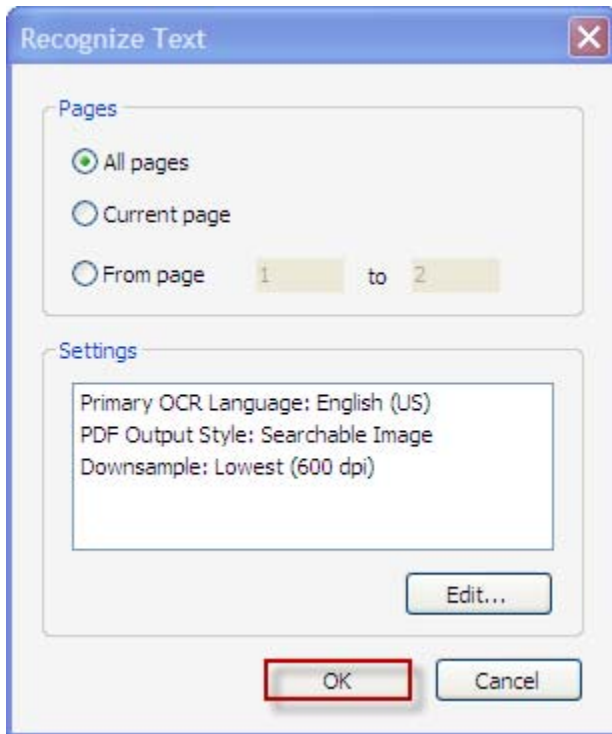
INSERTING TEXT FROM HISTORIC FILES

The following instructions will assist in allowing a user to copy and paste text from a .pdf file to insert into the Historic database.

1. Scan the historic text reference into PDF format.
2. Open the historic PDF file with Adobe Acrobat.
3. Select the “OCR Text Recognition” from the Document drop-down menu along the top toolbar.
4. A second drop-down menu will appear to the right of the OCR Text Recognition; select “Recognize Text Using OCR”.



5. A menu will appear prompting selection of “All pages”, “Current page”, or “From page”.
6. Ensure the circle next to “All pages” is selected and press “OK”.



7. The text recognition function will allow the user to now select any text, copy, and paste into another program/database*, similar to using Microsoft Word.

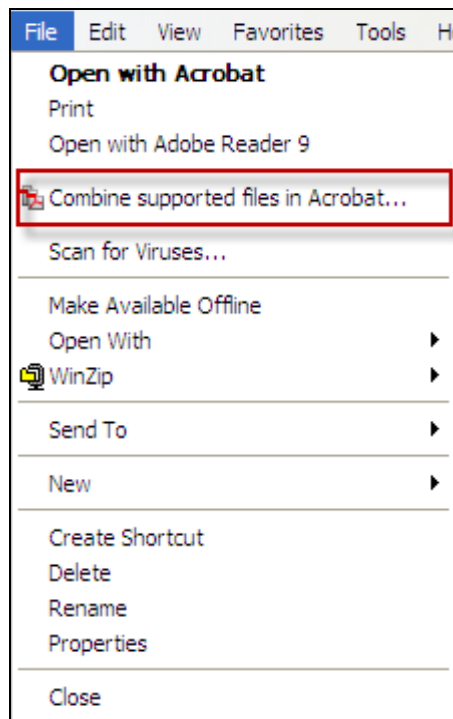
* Sometimes the formatting of the text (spelling, spacing, and margins) will be affected by the process and further refinement/editing will be required to ensure accuracy.

Creating Historic and Modern Picture Files

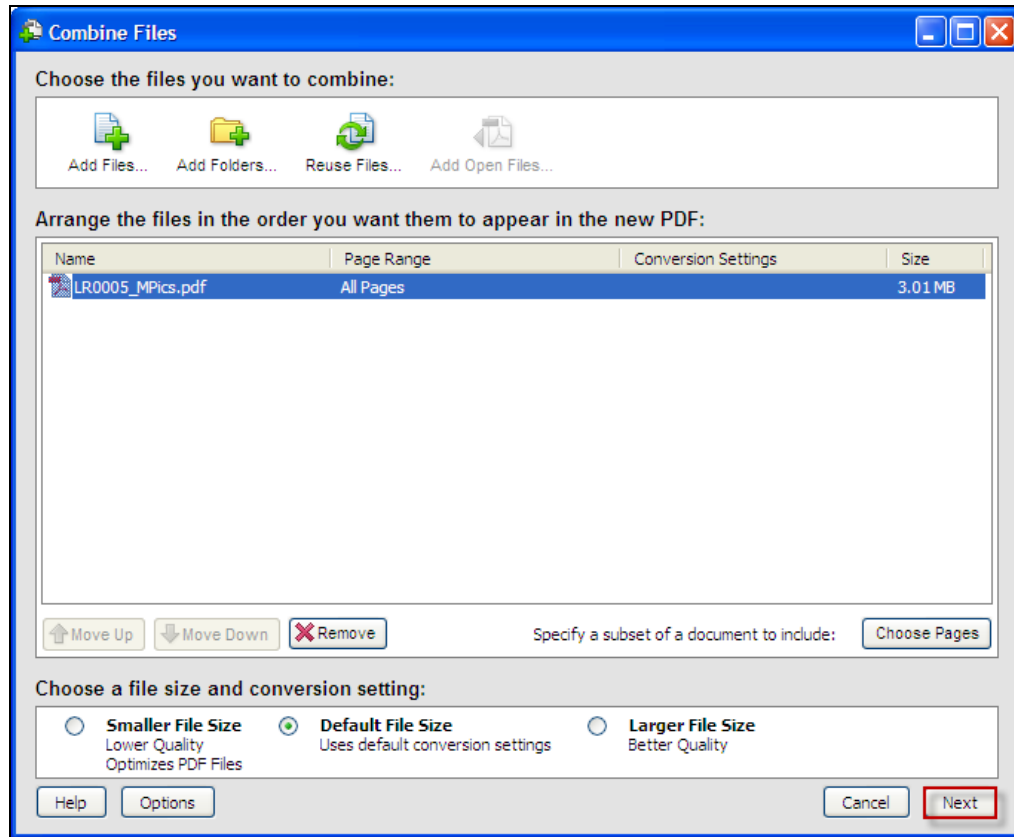
The following instructions will assist in allowing a user to create Historic and Modern Picture files, condense them into a single .pdf file, label, and finally to insert into the Historic database.

Historic Photos

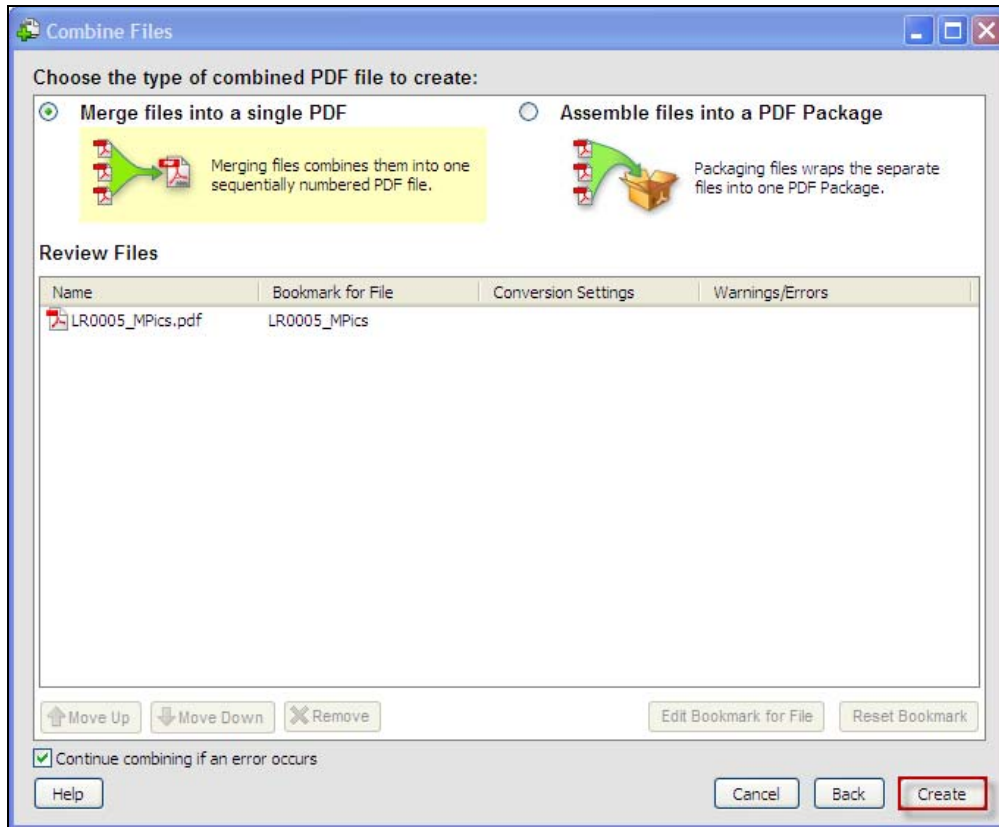
1. Scan and save any historic photos to a PDF format into a single folder with the label of which historic property (ie. LR0001_HPics).
2. Ensure you are running Adobe Acrobat on your computer, if not, a trial version can be downloaded from www.adobe.com
3. Using Adobe Acrobat, combine all files into a single .pdf file.
 1. Select all individual files.
 2. Select the “File” drop-down menu.
 3. Select “Combine supported files in Acrobat....”



- 4 A new menu will appear, allowing you to arrange the order of your files, by using the “Move up”, “Move down” buttons, or “Remove” if you accidentally selected the wrong file.
- 5 Once you are satisfied with the arrangement, select “Next” from the lower right hand screen.



- a. The next menu will allow you to “merge files into a single PDF”, or “Assemble files into a PDF Package”.
- b. Ensure “Merge files into a single PDF” is selected and click “Create” in the lower right hand corner.



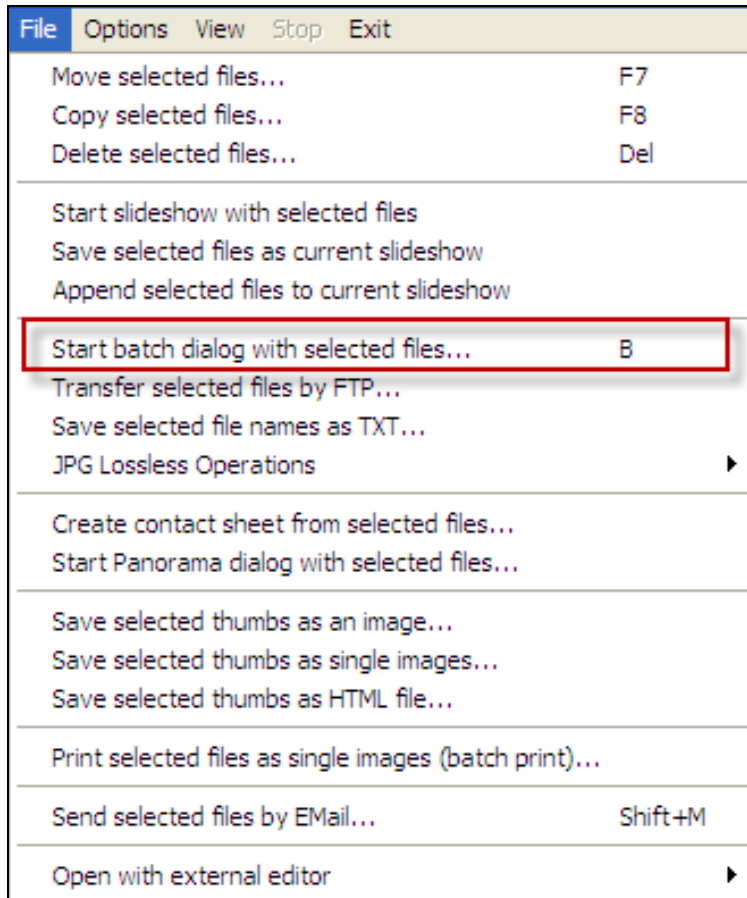
- c. The files will then be combined and an option to “Save” will appear in the lower right hand corner.
 - d. Select “Save”, name the file in the same file folder as above.
- 6 With the database open, select “Upload Historic Pictures” and select the previously named file to attach.

Modern Photos

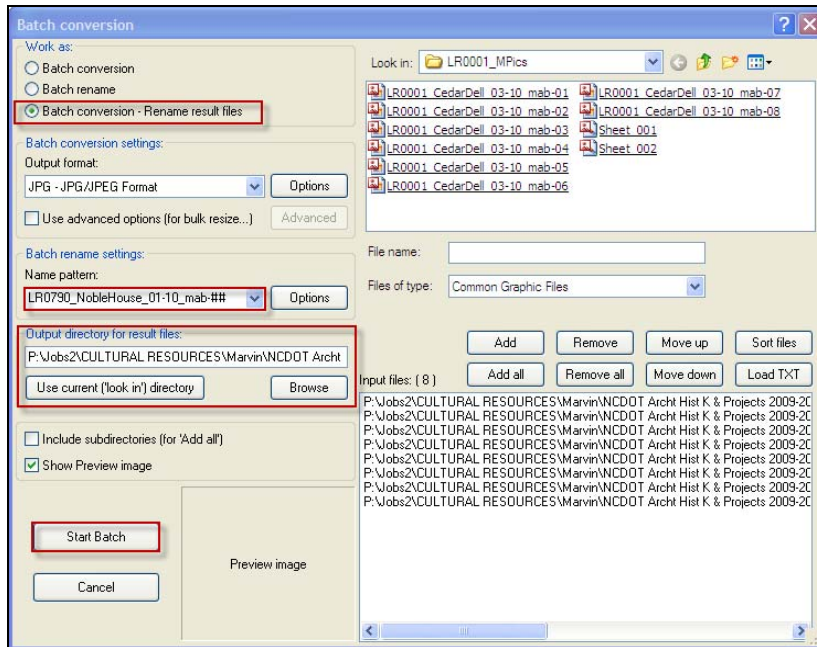
Modern photos follow the same directions as the historic photos in regards to combining into a PDF with a few exceptions.

1. When scanning and saving these files, save them as (LR0001_MPics) to help distinguish between the modern and historic photos.
2. There are more modern photos than historic photos and as such, need a way to be properly named, as well as grouped together.
3. IrfanView is a program designed to both rename files and combine them.

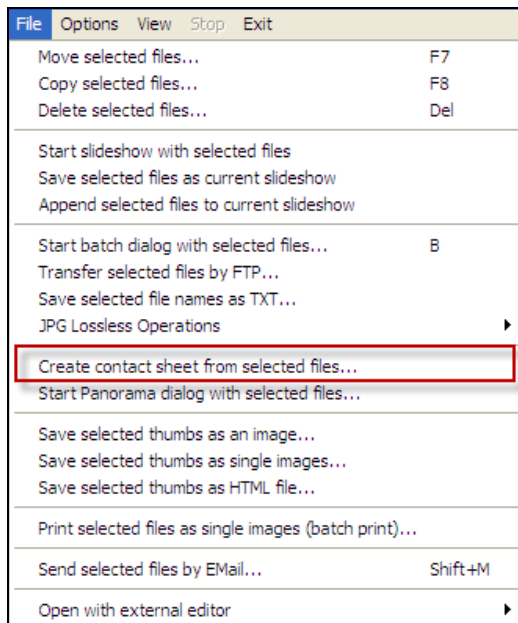
- a. Ensure you have IrfanView on your computer, if not, it can be downloaded from www.irfanview.com
- b. Once IrfanView is downloaded and installed, open “IrfanView Thumbnails” and select the modern photos file folder from the left hand side menu. This will open all the photos.
- c. Using “Ctrl-A” or choosing “Select All” from the “Options” menu, select all modern photos in the file folder.
- d. Next, from the “File” menu, select “Start Batch Dialog with selected files”.



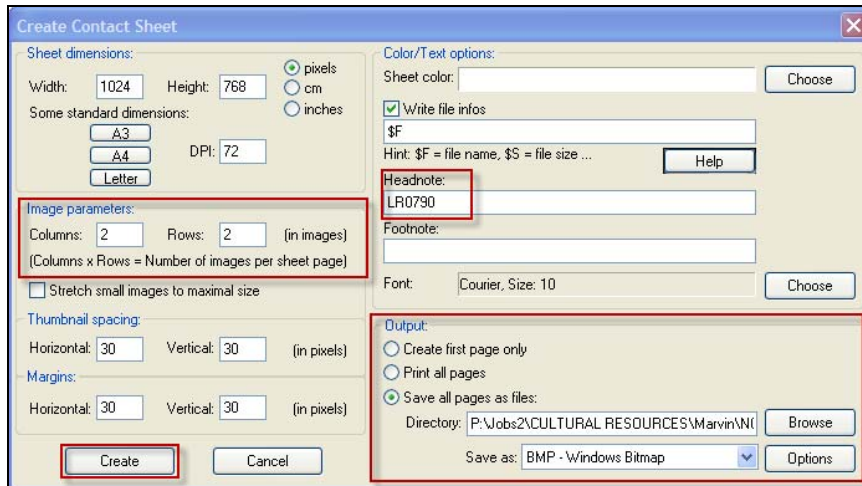
- e. A new window will appear; ensure that “Batch conversion – Rename result files” is selected, the naming convention of “LRXXXX_Name_Date_Photographer_##” is properly inputted, and that the output directory is the same file folder as initially saved to (see above).



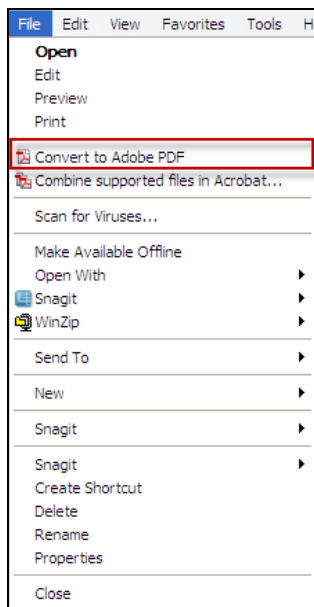
- When finished, select “Start Batch”, the resulting files should be renamed with the convention inputted.
- Once the files have been renamed, they can be combined to group the photos.
- Using “Ctrl-A” or choosing “Select All” from the “Options” menu, select all the renamed modern photos in the file folder.
- Next, from the “File” menu, select “Create contact sheet from selected files”.



- A new menu will appear allowing you to choose options in creating the contact sheets.



- k. Ensure that under “Image Parameters”, 2 columns and 2 rows are selected, the “Headnote” indicates which historic property it is, and finally, that the Output “Saves all pages as files:” into the correct directory.
- l. Select “Create” and IrfanView will create and save Microsoft Bitmap images.
- m. Once the files are in BMP format, select the group, and then click “File”, “Convert to Adobe PDF”. The BMP files will be converted to PDF files.



- n. Once the PDF files have been converted, save within the same file folder and combine into one document (as detailed above).

Once complete, with the database open, select “Upload Modern Pictures” and select the previously named file to attach.